

Datasheet for ABIN1106837

anti-CRLF2 antibody**2** Images[Go to Product page](#)

Overview

Quantity:	0.1 mg
Target:	CRLF2
Reactivity:	Human
Host:	Mouse
Clonality:	Monoclonal
Conjugate:	This CRLF2 antibody is un-conjugated
Application:	Western Blotting (WB), Immunohistochemistry (Paraffin-embedded Sections) (IHC (p)), Enzyme Immunoassay (EIA)

Product Details

Clone:	8H8
Isotype:	IgG1
Specificity:	Reacts with Human 42 kDa TSLP Receptor
Cross-Reactivity (Details):	Species reactivity (tested):Human.
Purification:	Protein A Chromatography.

Target Details

Target:	CRLF2
Alternative Name:	CRLF2 (CRLF2 Products)
Background:	TSLPR is a 42 kDa glycoprotein belonging to the type 1 cytokine receptor family. TSLPR is

Target Details

primarily expressed by dendritic cells and monocytes, and weakly expressed by T-cells. It is also expressed by non-haematopoietic tissues such as the heart, skeletal muscle, kidney and liver. The TSLP receptor forms functional complexes with thymic stromal lymphopoietin (TSLP) and IL-7R, which are capable of stimulating cell proliferation through activation of Stat3 and Stat5. Synonyms: Cytokine receptor-like 2, Cytokine receptor-like factor 2, IL-XR, ILXR, TSLPR, Thymic stromal lymphopoietin protein receptor

Gene ID: 64109

Application Details

Application Notes: Optimal working dilution should be determined by the investigator.

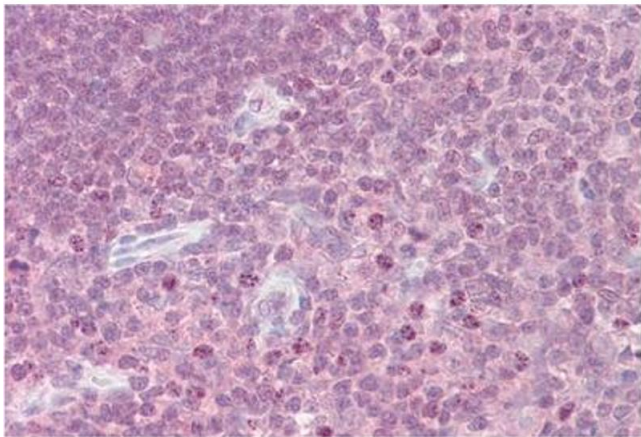
Restrictions: For Research Use only

Handling

Reconstitution: Restore in distilled water.

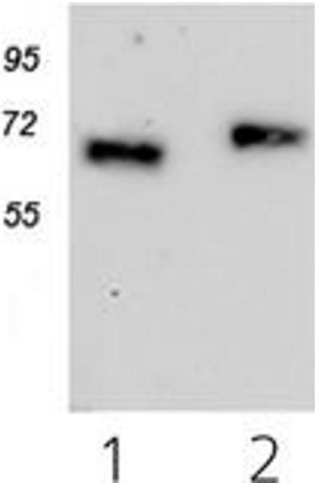
Buffer: PBS, None

Images



Immunohistochemistry

Image 1.



Western Blotting

Image 2.