

Datasheet for ABIN1106871 **anti-Cyclin D1 antibody**

4 Images



[Go to Product page](#)

Overview

Quantity:	0.1 mg
Target:	Cyclin D1 (CCND1)
Reactivity:	Human, Mouse
Host:	Mouse
Clonality:	Monoclonal
Conjugate:	This Cyclin D1 antibody is un-conjugated
Application:	Western Blotting (WB), Flow Cytometry (FACS), Immunoprecipitation (IP), Immunohistochemistry (Paraffin-embedded Sections) (IHC (p))

Product Details

Immunogen:	Recombinant human PRAD1/Cyclin D1
Clone:	5D4
Isotype:	IgG2a
Specificity:	This antibody reacts with human Cyclin D1 (36 kDa). This clone 5D4 recognizes human Cyclin D1, D2 and mouse Cyclin D1, D2, but not human and mouse Cyclin D3.
Cross-Reactivity (Details):	Species reactivity (tested): Human, mouse
Purification:	Protein A agarose

Target Details

Target:	Cyclin D1 (CCND1)
---------	-------------------

Target Details

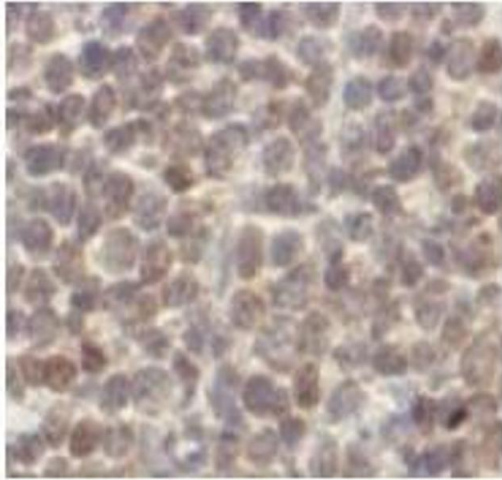
Alternative Name:	Cyclin D1 (CCND1 Products)
Background:	<p>Cyclin D1, also known as Bcl-1, CCND1, or PRAD-1, is a 36 kDa nuclear protein that plays a key regulatory role during the G1 phase of the cell cycle by regulating the activity of Cdk proteins. Cyclin D1 forms a complex with Cdk4, then binds to and phosphorylates Rb protein, triggering cells to progress from G0/G1 to S and thus driving cellular proliferation. Cyclin D1 protein overexpression is found in the majority of human breast cancers and is usually linked with poor prognosis. Overexpression of cyclin D1 is a well-established criterion for the diagnosis of Mantle Cell Lymphoma, and also has been used to distinguish malignant breast carcinomas from premalignant breast lesions. Synonyms: BCL-1 oncogene, BCL1, CCND1, Cyclin-D1, G1/S-specific cyclin-D1, PRAD-1 oncogene, PRAD1</p>
Gene ID:	595
NCBI Accession:	NP_444284
UniProt:	P24385
Pathways:	PI3K-Akt Signaling , Cell Division Cycle , Mitotic G1-G1/S Phases , ER-Nucleus Signaling

Application Details

Application Notes:	Optimal working dilution should be determined by the investigator.
Restrictions:	For Research Use only

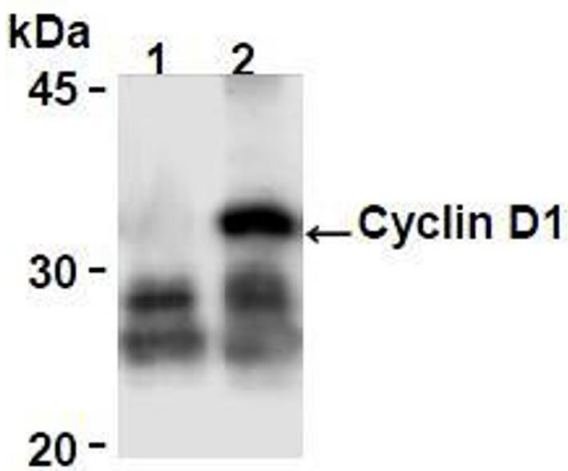
Handling

Concentration:	1.0 mg/mL
Buffer:	PBS containing 50 % glycerol, pH 7.2
Preservative:	Azide free
Handling Advice:	Avoid repeated freezing and thawing.
Storage:	-20 °C
Storage Comment:	Store (in aliquots) at -20 °C.



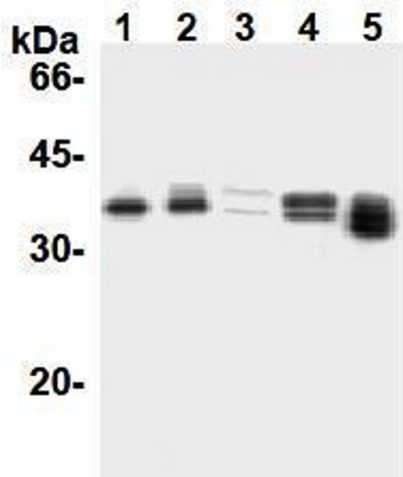
Immunohistochemistry

Image 1.



Western Blotting

Image 2.



Western Blotting

Image 3.

Please check the [product details page](#) for more images. Overall 4 images are available for ABIN1106871.