



[Go to Product page](#)

Datasheet for ABIN1106884

anti-CYP1A1 antibody

4 Images

Overview

Quantity:	0.1 mg
Target:	CYP1A1
Reactivity:	Human
Host:	Mouse
Clonality:	Monoclonal
Conjugate:	This CYP1A1 antibody is un-conjugated
Application:	Western Blotting (WB), Immunohistochemistry (Paraffin-embedded Sections) (IHC (p)), Enzyme Immunoassay (EIA)

Product Details

Clone:	6G5
Isotype:	IgG1
Specificity:	This antibody recognizes Human CYP1A1. Other species not tested.
Purification:	Purified

Target Details

Target:	CYP1A1
Alternative Name:	CYP1A1 (CYP1A1 Products)
Background:	This gene, CYP1A1, encodes a member of the cytochrome P450 superfamily of enzymes. The cytochrome P450 proteins are monooxygenases which catalyze many reactions involved in drug metabolism and synthesis of cholesterol, steroids and other lipids. This protein localizes

Target Details

to the endoplasmic reticulum and its expression is induced by some polycyclic aromatic hydrocarbons (PAHs), some of which are found in cigarette smoke. The enzyme's endogenous substrate is unknown, however, it is able to metabolize some PAHs to carcinogenic intermediates. The gene has been associated with lung cancer risk. A related family member, CYP1A2, is located approximately 25 kb away from CYP1A1 on chromosome 15. Synonyms: Cytochrome P450 1A1, Cytochrome P450 form 6, Cytochrome P450-C, Cytochrome P450-P1

Molecular Weight: 58 kDa

Gene ID: 1543

Pathways: [Steroid Hormone Biosynthesis](#), [Regulation of Lipid Metabolism by PPARalpha](#)

Application Details

Application Notes: Optimal working dilution should be determined by the investigator.

Restrictions: For Research Use only

Handling

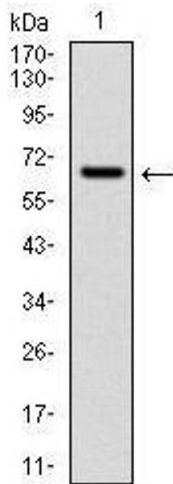
Format: Liquid

Concentration: 1.0 mg/mL

Buffer: PBS, 0.05 % Sodium Azide, 0.5 % BSA

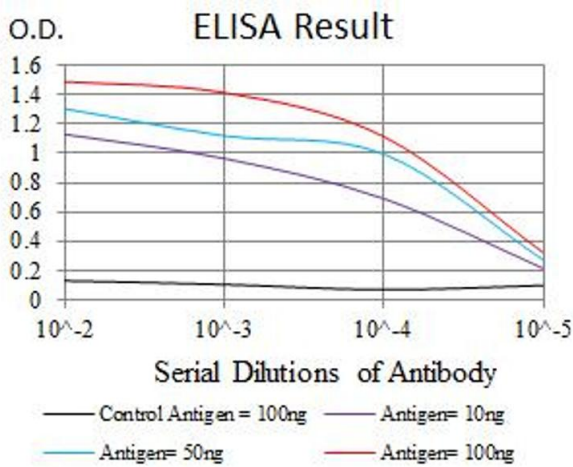
Preservative: Sodium azide

Precaution of Use: This product contains sodium azide: a POISONOUS AND HAZARDOUS SUBSTANCE which should be handled by trained staff only.



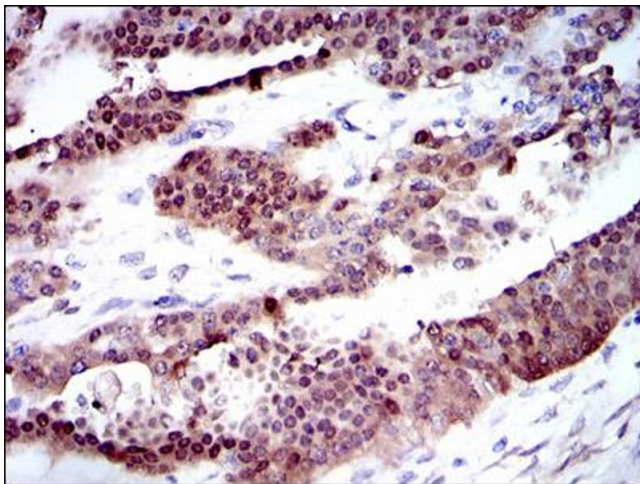
Western Blotting

Image 1.



ELISA

Image 2.



Immunohistochemistry

Image 3.

Please check the [product details page](#) for more images. Overall 4 images are available for ABIN1106884.