

Datasheet for ABIN1107072
anti-EHMT1 antibody



[Go to Product page](#)

1 Image

Overview

Quantity:	0.1 mL
Target:	EHMT1
Reactivity:	Human
Host:	Mouse
Clonality:	Monoclonal
Conjugate:	This EHMT1 antibody is un-conjugated
Application:	Western Blotting (WB), Enzyme Immunoassay (EIA)

Product Details

Clone:	1B7B4
Isotype:	IgG1
Specificity:	This antibody reacts to GLP.
Cross-Reactivity (Details):	Species reactivity (tested):Human.
Purification:	Purified

Target Details

Target:	EHMT1
Alternative Name:	EHMT1 (EHMT1 Products)
Background:	Glucagon-like peptide-1 (GLP-1) is an incretin hormone secreted from enteroendocrine L cells in response to ingested nutrients. The closely related peptides glucagon-like peptide (GLP-1) and

Target Details

glucagon have opposing effects on blood glucose. GLP-1 induces glucose-dependent insulin secretion in the pancreas, while glucagon stimulates gluconeogenesis and glycogenolysis in the liver. Glucagon is processed from a large precursor, proglucagon, in a tissue-specific manner in pancreatic alpha-cells. The identification of a hybrid peptide acting as both a GLP-1 agonist and a glucagon antagonist would provide a novel approach for the treatment of type 2 diabetes.Synonyms: EUHMTASE1, Eu-HMTase1, Euchromatic histone-lysine N-methyltransferase 1, G9a-like protein 1, GLP, GLP1, H3-K9-HMTase 5, Histone H3-K9 methyltransferase 5, Histone-lysine N-methyltransferase EHMT1, KIAA1876, KMT1D, Lysine N-methyltransferase 1D

Gene ID: 79813

Application Details

Application Notes: Optimal working dilution should be determined by the investigator.

Restrictions: For Research Use only

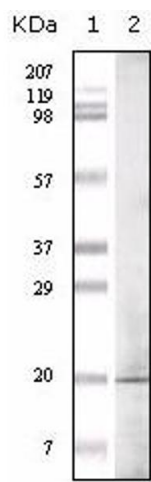
Handling

Buffer: PBS, 0,03 % sodium azide

Preservative: Sodium azide

Precaution of Use: This product contains sodium azide: a POISONOUS AND HAZARDOUS SUBSTANCE which should be handled by trained staff only.

Images



Western Blotting

Image 1.