

Datasheet for ABIN1107204

anti-FCRLA antibody (C-Term, Isoform 9, Middle Region)[Go to Product page](#)**1** Image

Overview

Quantity:	100 µL
Target:	FCRLA
Binding Specificity:	C-Term, Isoform 9, Middle Region
Reactivity:	Human
Host:	Rabbit
Clonality:	Polyclonal
Conjugate:	This FCRLA antibody is un-conjugated
Application:	Western Blotting (WB)

Product Details

Immunogen:	Synthetic peptide near to the middle to C-terminal region of human FCRLA, isoform 9
Sequence:	PTLNPAQKS AAPGTAPEEA PGPLPPPPTP SSEDPGFSSP LGMPDPHLYH
Cross-Reactivity (Details):	Species reactivity (tested):Human.
Purification:	Immunoaffinity column

Target Details

Target:	FCRLA
Alternative Name:	FCRLA (FCRLA Products)
Background:	Receptors for the Fc fragment of IgG, or FCGRs, are cell surface glycoproteins of the Ig superfamily (IgSF). These receptors mediate phagocytosis of IgG-coated pathogens and

Target Details

	promote activation of effector cells, leading to inflammatory responses and antibody-mediated cellular cytotoxicity. FCRLA may be implicated in B-cell differentiation and lymphomagenesis.Synonyms: FCRL, FCRL1, FCRLM1, FCRX, FREB, Fc receptor homolog expressed in B-cells, Fc receptor-like A, Fc receptor-like and mucin-like protein 1, Fc receptor-like protein, Fc receptor-related protein X
Molecular Weight:	FCRLA, isoform 9: 41 kDa
Gene ID:	84824
NCBI Accession:	NM_032738

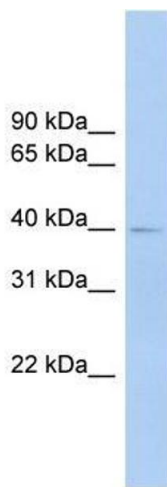
Application Details

Application Notes:	Optimal working dilution should be determined by the investigator.
Restrictions:	For Research Use only

Handling

Reconstitution:	Add 50 µL of distilled water to a final concentration of 1 mg/mL.
Handling Advice:	Avoid repeated freezing and thawing.
Storage:	4 °C/-20 °C
Storage Comment:	Store lyophilized at 2-8 °C for one month or at -20 °C long term. After reconstitution store the antibody undiluted at 2-8 °C for up to one month or in aliquots at -20 °C long term.

Images



Western Blotting

Image 1. Human Lung; WB Suggested Anti-FCRLA Antibody Titration: 0.2-1 ug/ml. Positive Control: Human Lung; FCRLA antibody - middle region in Human Lung cells using Western Blot