



Datasheet for ABIN1107266
anti-FOXF1 antibody (C-Term)



[Go to Product page](#)

2 Images

Overview

Quantity:	0.1 mg
Target:	FOXF1
Binding Specificity:	C-Term
Reactivity:	Human, Mouse, Dog, Chicken, Xenopus laevis
Host:	Rabbit
Clonality:	Polyclonal
Conjugate:	This FOXF1 antibody is un-conjugated
Application:	Western Blotting (WB), Immunohistochemistry (Paraffin-embedded Sections) (IHC (p))

Product Details

Immunogen:	The immunogen for anti-FOXF1 antibody: synthetic peptide directed towards the C terminal of human FOXF1
Sequence:	PCNPAANPLS GSLSTHSLEQ PYLHQNSHNA PAELQGIPRY HSQSPSMCDR
Cross-Reactivity (Details):	Species reactivity (expected):Mouse, Dog, Chicken, African clawed frogSpecies reactivity (tested):Human
Purification:	Purified using Protein A affinity column

Target Details

Target:	FOXF1
Alternative Name:	FOXF1 / FKHL5 (FOXF1 Products)

Target Details

Background: This gene belongs to the forkhead family of transcription factors which is characterized by a distinct forkhead domain. The specific function of this gene has not yet been determined, however, it may play a role in the regulation of pulmonary genes as well as embryonic development. Synonyms: FREAC1, Forkhead box protein F1, Forkhead-related activator 1, Forkhead-related protein FKHL5, Forkhead-related transcription factor 1

Gene ID: 2294

NCBI Accession: [NP_001442](#)

Pathways: [Regulation of Leukocyte Mediated Immunity](#), [Regulation of Muscle Cell Differentiation](#), [Positive Regulation of Immune Effector Process](#)

Application Details

Application Notes: Optimal working dilution should be determined by the investigator.

Restrictions: For Research Use only

Handling

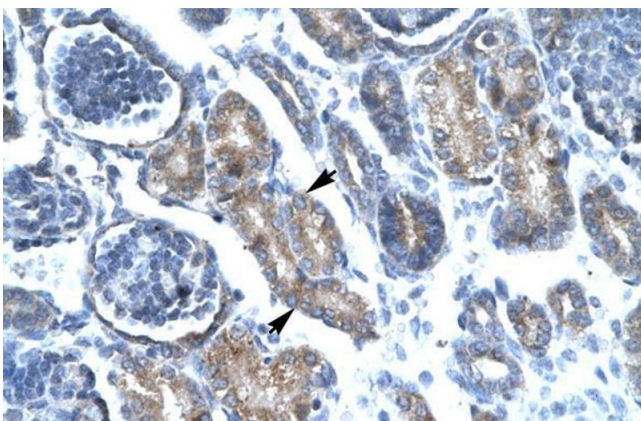
Reconstitution: Add 100 µL of distilled water to a final concentration of 1 mg/mL.

Handling Advice: Avoid repeated freezing and thawing.

Storage: 4 °C/-20 °C

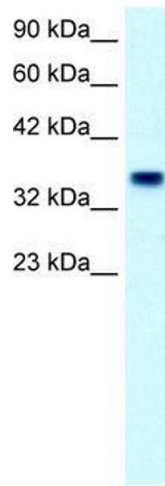
Storage Comment: Store lyophilized at 2-8 °C or at -20 °C long term. After reconstitution store the antibody undiluted at 2-8 °C for up to one month or in aliquots at -20 °C long term.

Images



Immunohistochemistry

Image 1. Human kidney; FOXF1 antibody - C-terminal region in Human kidney cells using Immunohistochemistry



Western Blotting

Image 2. Human Placenta; WB Suggested Anti-FOXF1 Antibody Titration: 2.5ug/ml. Positive Control: Human Placenta; FOXF1 antibody - C-terminal region in Human Placenta cells using Western Blot