

Datasheet for ABIN1107588
anti-HMX1 antibody (Middle Region)

3 Images

[Go to Product page](#)

Overview

Quantity:	100 µL
Target:	HMX1
Binding Specificity:	Middle Region
Reactivity:	Human, Zebrafish (Danio rerio), Cow, Dog, Mouse, Rat, Chicken, Drosophila melanogaster
Host:	Rabbit
Clonality:	Polyclonal
Application:	Western Blotting (WB)

Product Details

Immunogen:	The immunogen for anti-HMX1 antibody: synthetic peptide directed towards the middle region of human HMX1.
Sequence:	AGETRGGVGV GGGRKKKTRT VFSSQVFQL ESTFDLKRYL STAERAGLAA
Cross-Reactivity (Details):	Species reactivity (expected): Mouse, Rat, Dog, Chicken, Bovine, Drosophila, Zebrafish Species reactivity (tested): Human
Purification:	Purified using peptide immunoaffinity column

Target Details

Target:	HMX1
Alternative Name:	HMX1 (HMX1 Products)
Background:	HMX1 acts as a transcriptional antagonist and is part of the Hmx family of homeodomain proteins which are predominately expressed in discrete regions of developing sensory tissues.

Target Details

Defects in HMX1 are the cause of oculoauricular syndrome (OCLAUS) also known as microphthalmia, microcornea, anterior segment dysgenesis, cataract, ocular coloboma, retinal pigment epithelium abnormalities, rod-cone dystrophy, and anomalies of the external ear. Synonyms: Homeobox protein H6, Homeobox protein HMX-1

Gene ID: 3166

NCBI Accession: [NP_061815](#)

Application Details

Application Notes: Optimal working dilution should be determined by the investigator.

Restrictions: For Research Use only

Handling

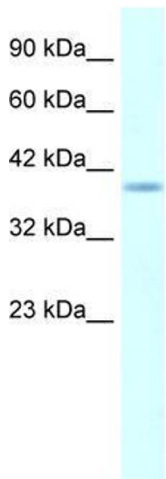
Reconstitution: Add 50 µL of distilled water to a final concentration of 1 mg/mL.

Handling Advice: Avoid repeated freezing and thawing.

Storage: 4 °C/-20 °C

Storage Comment: Store lyophilized at 2-8 °C or at -28 °C long term. After reconstitution store the antibody undiluted at 2-8 °C for up to one month or in aliquots at -28 °C long term.

Images

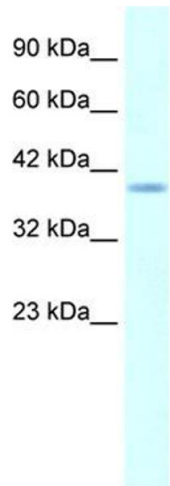


Rabbit Anti- HMX1 Antibody
Catalog Number: ARP32629
Lot Number: QC2063
Lane: Daudi Cell Lysate

Antibody Titration: 4.0 µg/ml
Gel Concentration: 12%

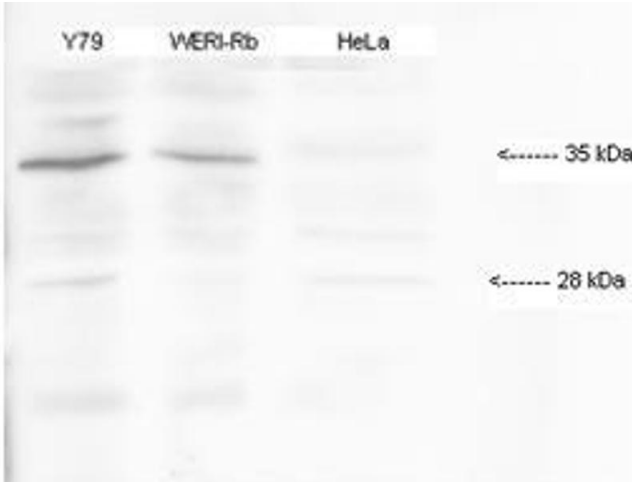
Western Blotting

Image 1. Human Daudi; WB Suggested Anti-HMX1 Antibody Titration: 4.0 µg/ml. Positive Control: Daudi cell lysate. HMX1 is supported by BioGPS gene expression data to be expressed in Daudi.; HMX1 antibody - middle region in Human Daudi cells using Western Blot



Western Blotting

Image 2. Human Daudi; WB Suggested Anti-HMX1 Antibody Titration: 5.0ug/ml Positive Control: Daudi. HMX1 is supported by BioGPS gene expression data to be expressed in Daudi.; HMX1 antibody - middle region in Human Daudi cells using Western Blot



Western Blotting

Image 3. Human; HMX1 antibody - middle region validated by WB using Y79, WERI-(human retinoblastoma cell lines), HeLa-(human papilloma virus cell line) at 1:1000.; HMX1 antibody - middle region in Human cells using Western Blot