

Datasheet for ABIN1107765

anti-PDX1 antibody

4 Images

[Go to Product page](#)

Overview

Quantity:	0.1 mg
Target:	PDX1
Reactivity:	Human
Host:	Mouse
Clonality:	Monoclonal
Conjugate:	This PDX1 antibody is un-conjugated
Application:	Western Blotting (WB), Flow Cytometry (FACS), Enzyme Immunoassay (EIA)

Product Details

Clone:	5A5
Isotype:	IgG1
Specificity:	Recognizes Insulin promoter factor 1 (PDX1)
Cross-Reactivity (Details):	Species reactivity (tested):Human.
Purification:	Purified

Target Details

Target:	PDX1
Alternative Name:	Insulin Promoter Factor 1 (PDX1 Products)
Background:	The protein encoded by this gene is a transcriptional activator of several genes, including insulin, somatostatin, glucokinase, islet amyloid polypeptide, and glucose transporter type 2.

Target Details

The encoded nuclear protein is involved in the early development of the pancreas and plays a major role in glucose-dependent regulation of insulin gene expression. Defects in this gene are a cause of pancreatic agenesis, which can lead to early-onset insulin-dependent diabetes mellitus (NIDDM), as well as maturity onset diabetes of the young type 4 (MODY4). Synonyms: GSF, Glucose-sensitive factor, IDX-1, IPF-1, IPF1, IUF-1, Insulin promoter factor 1, Insulin upstream factor 1, Islet/duodenum homeobox-1, PDX-1, PDX1, Pancreas/duodenum homeobox protein 1, STF-1, Somatostatin-transactivating factor 1

Molecular Weight: 30.8 kDa

Gene ID: 3651

Pathways: [Nuclear Receptor Transcription Pathway](#), [Positive Regulation of Peptide Hormone Secretion](#), [Steroid Hormone Mediated Signaling Pathway](#), [Hormone Transport](#), [Carbohydrate Homeostasis](#), [Chromatin Binding](#), [Maintenance of Protein Location](#)

Application Details

Application Notes: Optimal working dilution should be determined by the investigator.

Restrictions: For Research Use only

Handling

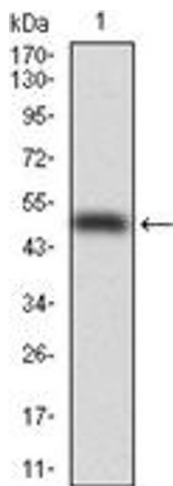
Format: Liquid

Concentration: 1.0 mg/mL

Buffer: PBS, 0.05 % Sodium Azide, 0.5 % protein stabilizer

Preservative: Sodium azide

Precaution of Use: This product contains sodium azide: a POISONOUS AND HAZARDOUS SUBSTANCE which should be handled by trained staff only.



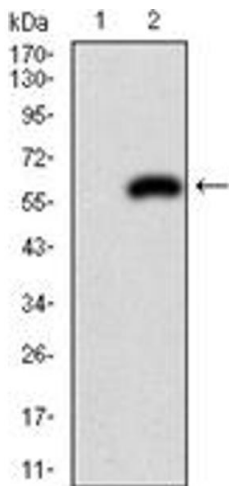
Western Blotting

Image 1.



ELISA

Image 2.



Western Blotting

Image 3.

Please check the [product details page](#) for more images. Overall 4 images are available for ABIN1107765.