



[Go to Product page](#)

Datasheet for ABIN1108057  
**anti-BPIFB1 antibody**

5 Images

### Overview

Quantity:	0.1 mg
Target:	BPIFB1
Reactivity:	Human, Mouse
Host:	Mouse
Clonality:	Monoclonal
Conjugate:	This BPIFB1 antibody is un-conjugated
Application:	Western Blotting (WB), Flow Cytometry (FACS), Immunohistochemistry (Paraffin-embedded Sections) (IHC (p)), Immunofluorescence (IF), Enzyme Immunoassay (EIA)

### Product Details

Clone:	4H2
Isotype:	IgG1
Cross-Reactivity (Details):	Species reactivity (tested):Human, Mouse.
Purification:	Purified

### Target Details

Target:	BPIFB1
Alternative Name:	LPLUNC1 ( <a href="#">BPIFB1 Products</a> )
Background:	Synonyms: C20orf114, Long palate, VEMSGP, Von Ebner minor salivary gland protein, chromosome 20 open reading frame 114, lung and nasal epithelium carcinoma-associated protein 1

## Target Details

Molecular Weight: 52.4 kDa

Gene ID: 228801

## Application Details

Application Notes: Optimal working dilution should be determined by the investigator.

Restrictions: For Research Use only

## Handling

Format: Liquid

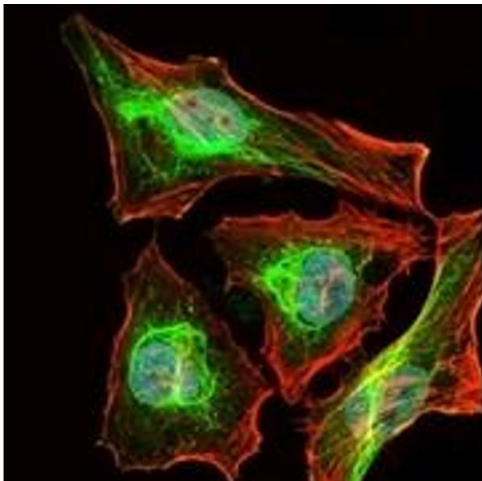
Concentration: 1.0 mg/mL

Buffer: PBS containing 0.05 % Sodium Azide and 0.5 % protein stabilizer

Preservative: Sodium azide

Precaution of Use: This product contains sodium azide: a POISONOUS AND HAZARDOUS SUBSTANCE which should be handled by trained staff only.

## Images

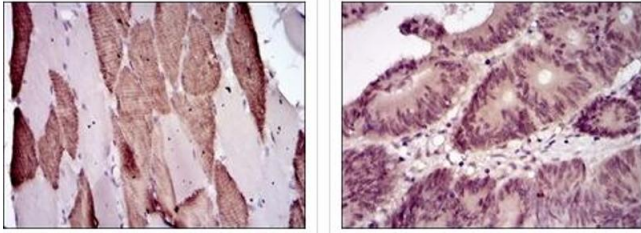


### Immunofluorescence

**Image 1.**

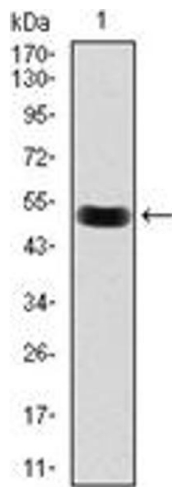
### Immunohistochemistry

Image 2.



### Western Blotting

Image 3.



Please check the [product details page](#) for more images. Overall 5 images are available for ABIN1108057.