

Datasheet for ABIN1108063

anti-LRP5 antibody

3 Images

[Go to Product page](#)

Overview

Quantity:	0.1 mg
Target:	LRP5
Reactivity:	Human
Host:	Mouse
Clonality:	Monoclonal
Conjugate:	This LRP5 antibody is un-conjugated
Application:	Western Blotting (WB), Flow Cytometry (FACS), Enzyme Immunoassay (EIA)

Product Details

Clone:	2B11
Isotype:	IgG1
Specificity:	Recognizes LRP5
Cross-Reactivity (Details):	Species reactivity (tested):Human.
Purification:	Purified

Target Details

Target:	LRP5
Alternative Name:	LRP5 (LRP5 Products)
Background:	This gene encodes a transmembrane low-density lipoprotein receptor that binds and internalizes ligands in the process of receptor-mediated endocytosis. This protein also acts as

Target Details

a co-receptor with Frizzled protein family members for transducing signals by Wnt proteins and was originally cloned on the basis of its association with type 1 diabetes mellitus in humans. This protein plays a key role in skeletal homeostasis and many bone density related diseases are caused by mutations in this gene. Mutations in this gene also cause familial exudative vitreoretinopathy. Synonyms: LRP-5, LRP7, Low-density lipoprotein receptor-related protein 5

Molecular Weight: 179 kDa

Gene ID: 4041

Pathways: [WNT Signaling](#), [Stem Cell Maintenance](#), [Positive Regulation of fat Cell Differentiation](#)

Application Details

Application Notes: Optimal working dilution should be determined by the investigator.

Restrictions: For Research Use only

Handling

Format: Liquid

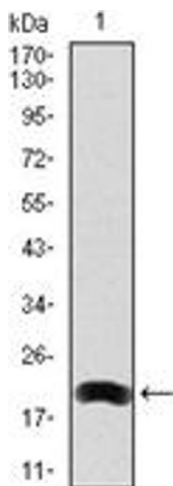
Concentration: 1.0 mg/mL

Buffer: PBS, 0.05 % Sodium Azide, 0.5 % protein stabilizer

Preservative: Sodium azide

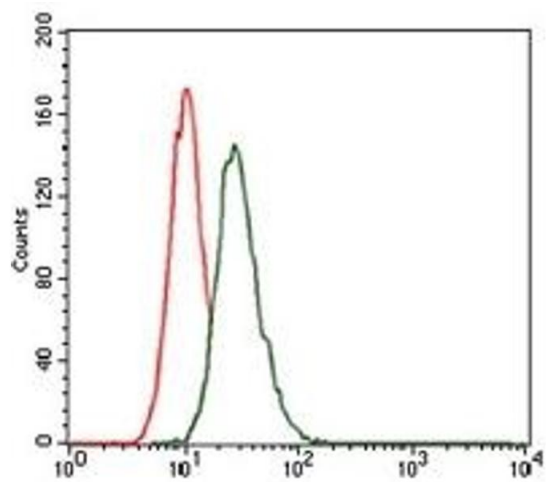
Precaution of Use: This product contains sodium azide: a POISONOUS AND HAZARDOUS SUBSTANCE which should be handled by trained staff only.

Images



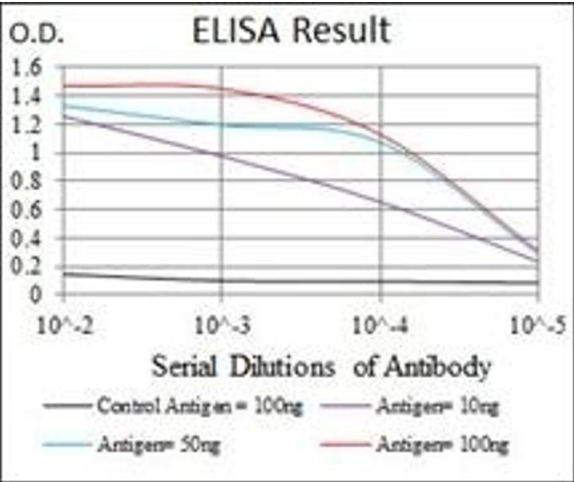
Western Blotting

Image 1.



Flow Cytometry

Image 2.



ELISA

Image 3.