



[Go to Product page](#)

Datasheet for ABIN1108070
anti-Luciferase antibody

2 Images

Overview

Quantity:	0.1 mg
Target:	Luciferase
Reactivity:	Photinus pyralis
Host:	Mouse
Clonality:	Monoclonal
Conjugate:	This Luciferase antibody is un-conjugated
Application:	Western Blotting (WB), Immunoprecipitation (IP)

Product Details

Immunogen:	Recombinant full length luciferase (photinus pyralis)
Clone:	2D4
Isotype:	IgG1
Cross-Reactivity (Details):	Species reactivity (tested):Photinus pyralis
Purification:	Protein A agarose

Target Details

Target:	Luciferase
Abstract:	Luciferase Products
Background:	Luciferase is a 61 kDa luminescent enzyme isolated from Photinus pyralis (North American Firefly). The enzyme catalyzes the ATP dependent oxidation of beetle luciferin to produce

Target Details

inorganic phosphate and light. Luciferase is frequently used as a reporter protein to quantify expression levels from promoters in tissue culture and in vivo. Synonyms: Luciferin 4-monooxygenase

Molecular Weight: 61 kDa

Gene ID: 7054

UniProt: [P08659](#)

Application Details

Application Notes: Optimal working dilution should be determined by the investigator.

Restrictions: For Research Use only

Handling

Concentration: 1.0 mg/mL

Buffer: PBS containing 50 % glycerol, pH 7.2. Contains no preservatives.

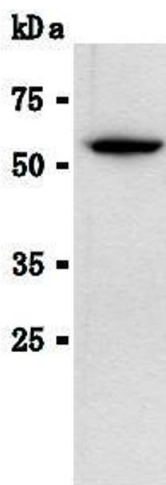
Preservative: Without preservative

Handling Advice: Avoid repeated freezing and thawing.

Storage: 4 °C/-20 °C

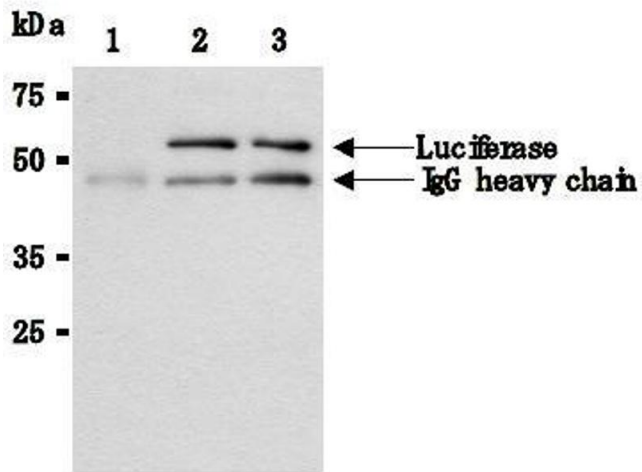
Storage Comment: Store undiluted at 2-8 °C for one month or (in aliquots) at -20 °C for longer.

Images



Western Blotting

Image 1.



Western Blotting

Image 2.