

Datasheet for ABIN1108078
anti-LY6G6F antibody (C-Term)



[Go to Product page](#)

1 Image

Overview

Quantity:	0.1 mg
Target:	LY6G6F
Binding Specificity:	C-Term
Reactivity:	Human
Host:	Rabbit
Clonality:	Polyclonal
Conjugate:	This LY6G6F antibody is un-conjugated
Application:	Western Blotting (WB), Enzyme Immunoassay (EIA), Immunohistochemistry (Frozen Sections) (IHC (fro))

Product Details

Immunogen:	Synthetic peptide derived from C-terminal domain of Human LY6G6F protein
Specificity:	This antibody reacts with 32 kDa LY6G6F protein.
Cross-Reactivity (Details):	Species reactivity (expected):Rat and other species. Species reactivity (tested):Human.
Purification:	Affinity Chromatography on Protein A

Target Details

Target:	LY6G6F
Alternative Name:	LY6G6F / C6orf21 (LY6G6F Products)

Target Details

Background:	Synonyms: G6F, LY6G6D, Lymphocyte antigen 6 complex locus protein G6f, NG32
Gene ID:	259215
NCBI Accession:	NP_001003693

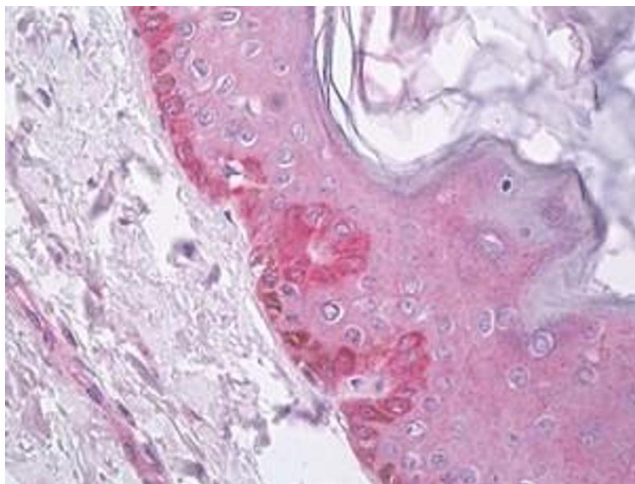
Application Details

Application Notes:	Optimal working dilution should be determined by the investigator.
Restrictions:	For Research Use only

Handling

Reconstitution:	Restore in distilled water.
Concentration:	1.0 mg/mL
Buffer:	0.1 M Tris, 0.1 M Glycine, 2 % Sucrose, None
Handling Advice:	Avoid repeated freezing and thawing.
Storage:	4 °C/-20 °C
Storage Comment:	Prior to reconstitution store at -20 °C. Following reconstitution store undiluted at 2-8 °C for one month or (in aliquots) at -20 °C for longer.

Images



Immunohistochemistry (Paraffin-embedded Sections)

Image 1. Skin stained in IHC-P with LY6G6F antibody