

Datasheet for ABIN1108164

**anti-MATK antibody**

## 2 Images

[Go to Product page](#)

## Overview

Quantity:	0.1 mL
Target:	MATK
Reactivity:	Human
Host:	Mouse
Clonality:	Monoclonal
Conjugate:	This MATK antibody is un-conjugated
Application:	Western Blotting (WB), Enzyme Immunoassay (EIA)

## Product Details

Clone:	9D7
Isotype:	IgG1
Specificity:	This antibody reacts to MATK.
Cross-Reactivity (Details):	Species reactivity (tested):Human.
Purification:	Affinity chromatography on Protein G

## Target Details

Target:	MATK
Alternative Name:	MATK ( <a href="#">MATK Products</a> )
Background:	MATK (megakaryocyte-associated tyrosine kinase), also known as CTK, this protein has amino acid sequence similarity to Csk tyrosine kinase and has the structural features of the CSK

## Target Details

subfamily: SRC homology SH2 and SH3 domains, a catalytic domain, a unique N terminus, lack of myristylation signals, lack of a negative regulatory phosphorylation site, and lack of an autophosphorylation site. This protein is thought to play a significant role in the signal transduction of hematopoietic cells. It is able to phosphorylate and inactivate Src family kinases, and may play an inhibitory role in the control of T-cell proliferation. This protein might be involved in signaling in some cases of breast cancer. Synonyms: CHK, CTK, HYL, HYLTK, Hematopoietic consensus tyrosine-lacking kinase, Megakaryocyte-associated tyrosine-protein kinase

Molecular Weight:	56 kDa
-------------------	--------

Gene ID:	4145
----------	------

## Application Details

Application Notes:	Optimal working dilution should be determined by the investigator.
--------------------	--

Restrictions:	For Research Use only
---------------	-----------------------

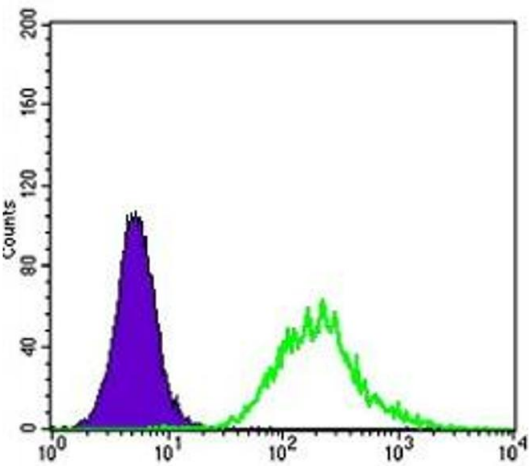
## Handling

Format:	Liquid
---------	--------

Buffer:	PBS, 0,03% sodium azide, 50 % glycerol
---------	--

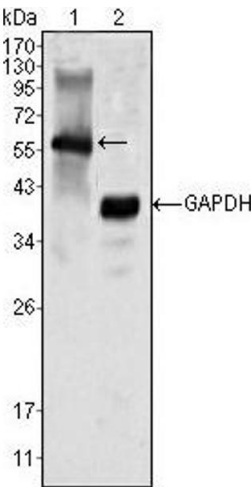
Preservative:	Sodium azide
---------------	--------------

Precaution of Use:	This product contains sodium azide: a POISONOUS AND HAZARDOUS SUBSTANCE which should be handled by trained staff only.
--------------------	--



Flow Cytometry

Image 1.



Western Blotting

Image 2.