

Datasheet for ABIN1108180

**anti-CCL2 antibody**

## 6 Images

[Go to Product page](#)

## Overview

Quantity:	0.1 mg
Target:	CCL2
Reactivity:	Human, Mouse, Monkey
Host:	Mouse
Clonality:	Monoclonal
Conjugate:	This CCL2 antibody is un-conjugated
Application:	Western Blotting (WB), Immunohistochemistry (Paraffin-embedded Sections) (IHC (p)), Immunofluorescence (IF), Flow Cytometry (FACS), Enzyme Immunoassay (EIA)

## Product Details

Clone:	2D8
Isotype:	IgG1
Specificity:	Recognizes CCL2
Cross-Reactivity (Details):	Species reactivity (tested): Human, Mouse, Monkey.
Purification:	Purified

## Target Details

Target:	CCL2
Alternative Name:	MCP1 / CCL2 ( <a href="#">CCL2 Products</a> )
Background:	This gene is one of several cytokine genes clustered on the q-arm of chromosome 17.

## Target Details

Cytokines are a family of secreted proteins involved in immunoregulatory and inflammatory processes. The protein encoded by this gene is structurally related to the CXC subfamily of cytokines. Members of this subfamily are characterized by two cysteines separated by a single amino acid. This cytokine displays chemotactic activity for monocytes and basophils but not for neutrophils or eosinophils. It has been implicated in the pathogenesis of diseases characterized by monocytic infiltrates, like psoriasis, rheumatoid arthritis and atherosclerosis. It binds to chemokine receptors CCR2 and CCR4. Synonyms: C-C motif chemokine 2, HC-11, HC11, MCAF, MCP-1, Monocyte chemoattractant protein 1, Monocyte chemotactic and activating factor, Monocyte chemotactic protein 1, Monocyte secretory protein JE, SCYA2, Small-inducible cytokine A2

Molecular Weight: 11 kDa

Gene ID: 6347

Pathways: [Cellular Response to Molecule of Bacterial Origin](#), [Positive Regulation of Immune Effector Process](#), [ER-Nucleus Signaling](#), [Unfolded Protein Response](#), [The Global Phosphorylation Landscape of SARS-CoV-2 Infection](#)

## Application Details

Application Notes: Optimal working dilution should be determined by the investigator.

Restrictions: For Research Use only

## Handling

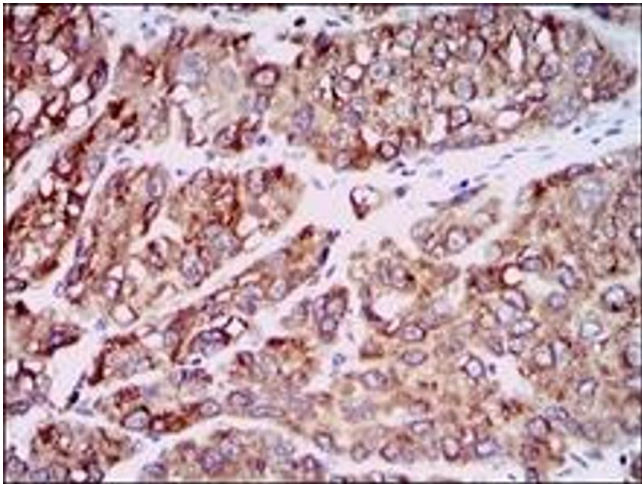
Format: Liquid

Concentration: 1.0 mg/mL

Buffer: PBS, 0.05 % Sodium Azide, 0.5 % protein stabilizer

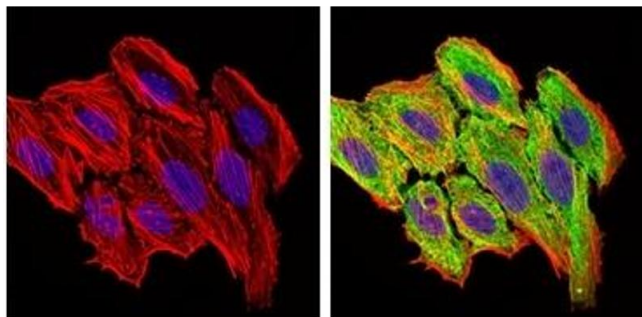
Preservative: Sodium azide

Precaution of Use: This product contains sodium azide: a POISONOUS AND HAZARDOUS SUBSTANCE which should be handled by trained staff only.



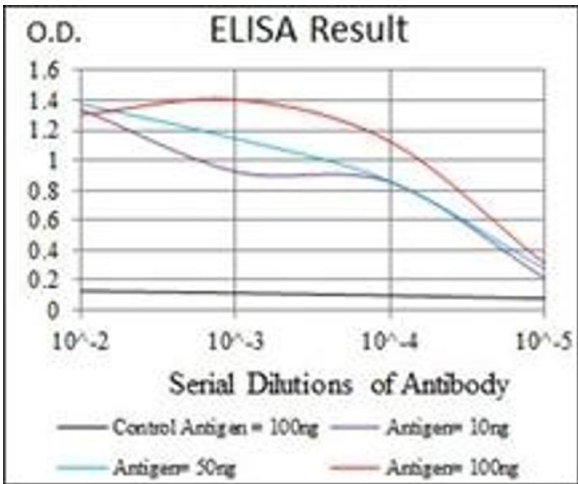
Immunohistochemistry

Image 1.



Immunofluorescence

Image 2.



ELISA

Image 3.

Please check the [product details page](#) for more images. Overall 6 images are available for ABIN1108180.