

Datasheet for ABIN1108300
anti-MRGPRC antibody (N-Term)



[Go to Product page](#)

1 Image

Overview

Quantity:	0.1 mg
Target:	MRGPRC
Binding Specificity:	AA 14-28, N-Term
Reactivity:	Rat
Host:	Rabbit
Clonality:	Polyclonal
Conjugate:	This MRGPRC antibody is un-conjugated
Application:	Western Blotting (WB), Immunohistochemistry (Paraffin-embedded Sections) (IHC (p))

Product Details

Immunogen:	A synthetic peptide corresponding to a sequence at the N-terminal of rat MRGPRC (14-28 amino acid)
Isotype:	IgG
Specificity:	This antibody detects MRGPRC (14-28).
Cross-Reactivity (Details):	Species reactivity (tested):Rat
Purification:	Immunogen affinity purified

Target Details

Target:	MRGPRC
Alternative Name:	MRGPRC (MRGPRC Products)

Target Details

Background: MAS-related G-protein coupled receptor, member C, also known as MRGPC or MRGPRX1, is a human gene. The Mas-related genes (Mrgs) comprise a family of >50 G protein-coupled receptors (GPCRs), many of which are expressed in specific subsets of nociceptive sensory neurons in mice. In contrast, humans contain a related but nonorthologous family of genes, called MrgXs or sensory neuron-specific receptors, of which many fewer appear to be expressed in sensory neurons. Synonyms: Mas-related G-protein coupled receptor member X1, Mrgc, Mrgprc11, Mrgprx1, Sensory neuron-specific G-protein coupled receptor 1, Snsr, Snsr1

Gene ID: 282547

NCBI Accession: [NP_001002286](#)

UniProt: [Q8R4G1](#)

Application Details

Application Notes: Optimal working dilution should be determined by the investigator.

Restrictions: For Research Use only

Handling

Reconstitution: 0.2 mL of distilled water will yield a concentration of 500 µg/mL.

Buffer: 5 mg BSA, 0.9 mg NaCl, 0.2 mg Na₂HPO₄, 0.05 mg Thimerosal, 0.05 mg NaN₃

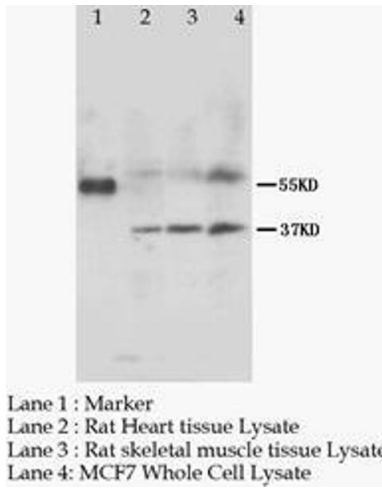
Preservative: Sodium azide, Thimerosal (Merthiolate)

Precaution of Use: This product contains Sodium azide and Thimerosal (Merthiolate): a POISONOUS AND HAZARDOUS SUBSTANCE, which should be handled by trained staff only.

Handling Advice: Avoid repeated freezing and thawing.

Storage: 4 °C/-20 °C

Storage Comment: Store at 2 - 8 °C for up to one month or (in aliquots) at -20 °C for longer.



Western Blotting

Image 1. MRGPCR SNSR Polyclonal Antibody