

Datasheet for ABIN1108416

anti-NEFL antibody

7 Images

[Go to Product page](#)

Overview

Quantity:	0.1 mg
Target:	NEFL
Reactivity:	Human
Host:	Mouse
Clonality:	Monoclonal
Application:	Western Blotting (WB), Immunofluorescence (IF), Flow Cytometry (FACS), Immunohistochemistry (Paraffin-embedded Sections) (IHC (p)), Enzyme Immunoassay (EIA)

Product Details

Clone:	1H3
Isotype:	IgG1
Specificity:	This antibody reacts to NEFL.
Cross-Reactivity (Details):	Species reactivity (tested):Human.
Purification:	Purified

Target Details

Target:	NEFL
Alternative Name:	Neurofilament L (68kDa) (NEFL Products)
Background:	Neurofilaments are type IV intermediate filament heteropolymers composed of light, medium, and heavy chains. Neurofilaments comprise the axoskeleton and they functionally maintain the neuronal caliber. They may also play a role in intracellular transport to axons and dendrites.

Target Details

This gene encodes the light chain neurofilament protein. Mutations in this gene cause Charcot-Marie-Tooth disease types 1F (CMT1F) and 2E (CMT2E), disorders of the peripheral nervous system that are characterized by distinct neuropathies. A pseudogene has been identified on chromosome Y. Synonyms: 68 kDa neurofilament protein, NEFL, NF-L, NF68, Neurofilament L

Molecular Weight: 62 kDa

Gene ID: 4747

Application Details

Application Notes: Optimal working dilution should be determined by the investigator.

Restrictions: For Research Use only

Handling

Format: Liquid

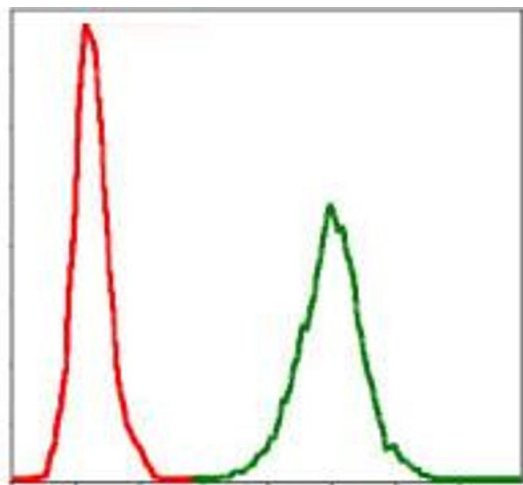
Concentration: 1.0 mg/mL

Buffer: PBS, 0.05 % sodium azide, 0,5 % BSA

Preservative: Sodium azide

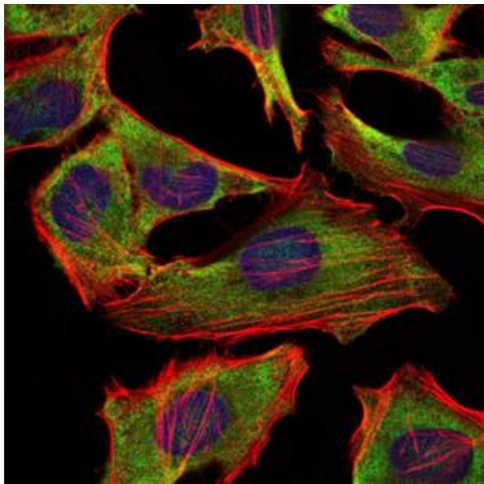
Precaution of Use: This product contains sodium azide: a POISONOUS AND HAZARDOUS SUBSTANCE which should be handled by trained staff only.

Images



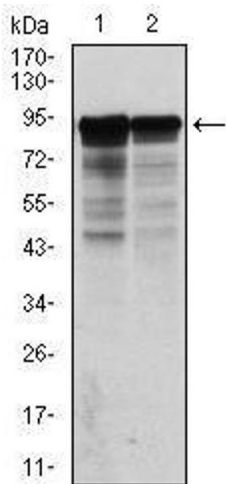
Flow Cytometry

Image 1.



Immunofluorescence

Image 2.



Western Blotting

Image 3.

Please check the [product details page](#) for more images. Overall 7 images are available for ABIN1108416.