

Datasheet for ABIN1108665
anti-PLGF antibody (N-Term)



[Go to Product page](#)

2 Images

Overview

Quantity:	0.1 mg
Target:	PLGF (PGF)
Binding Specificity:	N-Term
Reactivity:	Human, Mouse, Rat
Host:	Rabbit
Clonality:	Polyclonal
Application:	Western Blotting (WB), Immunohistochemistry (Paraffin-embedded Sections) (IHC (p)), Immunofluorescence (IF)

Product Details

Immunogen:	Synthetic peptide corresponding to a sequence mapping near the N-terminal of human PLGF .Remarks: Sequence is different from the related rat sequence by two different amino acids.
Isotype:	IgG
Specificity:	This antibody detects Placenta growth factor / PGF (N-term). No cross reactivity with other proteins.
Cross-Reactivity (Details):	Species reactivity (tested):Human, mouse, rat.
Purification:	Immunogen affinity purified

Target Details

Target:	PLGF (PGF)
Alternative Name:	Placenta Growth Factor / PGF (PGF Products)

Target Details

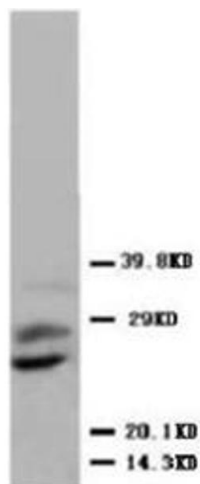
Background:	Placental growth factor (PGF, also known as PLGF) codes for an angiogenic factor expressed in placental tissue that is similar to vascular permeability factor/vascular endothelial growth factor (VPF/VEGF). It is a glycosylated dimeric secreted protein able to stimulate endothelial cell growth in vitro. PGF is located on chromosome 14 and has been conserved in evolution. It belongs to the family of vascular endothelial growth factors (VEGFs) and binds to the flt-1 VEGF receptor. PLGF-2, which is a PLGF isoform, binds neuropilin-1 and 2 in a heparin-dependent manner. PGF regulates inter-and intra molecular cross talk between the VEGF RTKs Flt1 and Flk1 and stimulates the phosphorylation of specific Flt1 tyrosine residues and the expression of distinct downstream target genes. Moreover, it plays an important role in pathological angiogenic events and with exerting its biological activities through binding to VEGFR1.Synonyms: PGFL, PLGF, PIGF
Gene ID:	5228
NCBI Accession:	NP_002623
UniProt:	P49763
Pathways:	VEGFR1 Specific Signals

Application Details

Application Notes:	Optimal working dilution should be determined by the investigator.
Restrictions:	For Research Use only

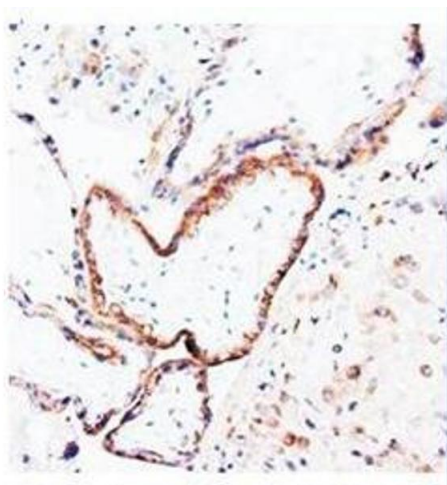
Handling

Reconstitution:	1.2 % sodium acetate or neutral PBS. If 0.5 mL of PBS is used, the antibody concentration will be 100 µg/mL.
Buffer:	50 % glycerol, 0.9 mg NaCl, 0.2 mg Na ₂ HPO ₄
Handling Advice:	Avoid repeated freezing and thawing.
Storage:	4 °C/-20 °C
Storage Comment:	Store at 2 - 8 °C for up to one month or (in aliquots) at -20 °C for longer.



Western Blotting

Image 1. Western blot analysis of human placenta tissue lysis using PLGF antibody



Immunohistochemistry (Paraffin-embedded Sections)

Image 2. Immunohistochemical analysis of paraffin embedded human placenta sections; staining in cytoplasm; DAB chromogenic reaction