



[Go to Product page](#)

Datasheet for ABIN1108715
anti-PPP2R4 antibody

6 Images

Overview

Quantity:	0.1 mg
Target:	PPP2R4
Reactivity:	Human
Host:	Mouse
Clonality:	Monoclonal
Conjugate:	This PPP2R4 antibody is un-conjugated
Application:	Western Blotting (WB), Immunofluorescence (IF), Immunohistochemistry (Paraffin-embedded Sections) (IHC (p)), Flow Cytometry (FACS), Enzyme Immunoassay (EIA)

Product Details

Clone:	4D9
Isotype:	IgG1
Specificity:	This antibody reacts to PPP2R4.
Cross-Reactivity (Details):	Species reactivity (tested):Human.
Purification:	Purified

Target Details

Target:	PPP2R4
Alternative Name:	PPP2R4 / PTPA (PPP2R4 Products)
Background:	Protein phosphatase 2A is one of the four major Ser/Thr phosphatases and is implicated in the

Target Details

negative control of cell growth and division. Protein phosphatase 2A holoenzymes are heterotrimeric proteins composed of a structural subunit A, a catalytic subunit C, and a regulatory subunit B. The regulatory subunit is encoded by a diverse set of genes that have been grouped into the B/PR55, B'/PR61, and B''/PR72 families. These different regulatory subunits confer distinct enzymatic specificities and intracellular localizations to the holoenzyme. The product of this gene belongs to the B' family. This gene encodes a specific phosphotyrosyl phosphatase activator of the dimeric form of protein phosphatase 2A. Alternative splicing results in multiple transcript variants encoding different isoforms. Synonyms: PP2A subunit B' PR53 isoform, Phosphotyrosyl phosphatase activator, Serine/threonine-protein phosphatase 2A regulatory subunit B'

Molecular Weight: 41 kDa

Gene ID: 5524

Pathways: [PI3K-Akt Signaling](#), [M Phase](#), [Hepatitis C](#), [Toll-Like Receptors Cascades](#)

Application Details

Application Notes: Optimal working dilution should be determined by the investigator.

Restrictions: For Research Use only

Handling

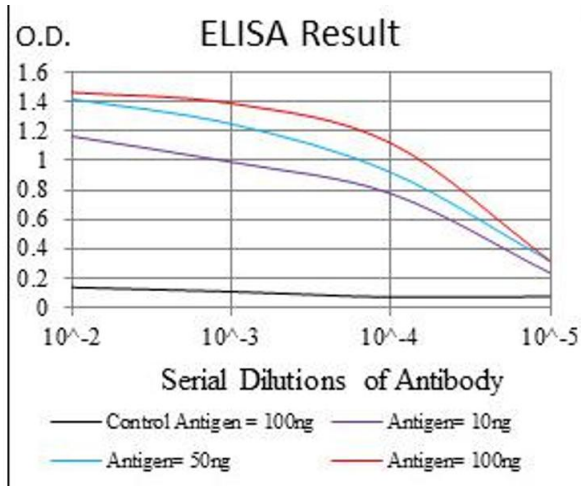
Format: Liquid

Concentration: 1.0 mg/mL

Buffer: PBS, 0,05 % sodium azide, 0,5 % BSA

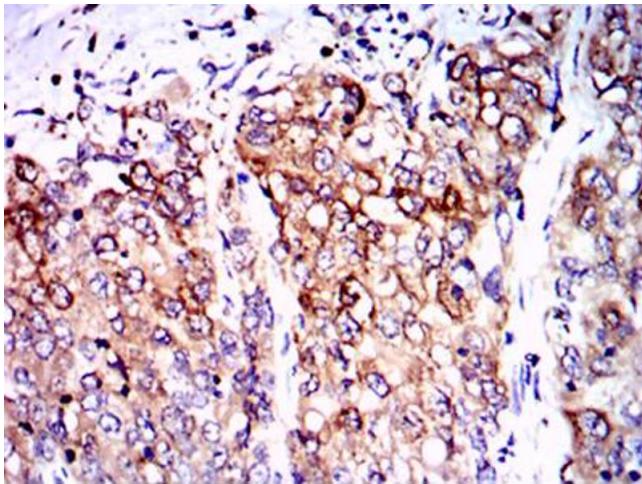
Preservative: Sodium azide

Precaution of Use: This product contains sodium azide: a POISONOUS AND HAZARDOUS SUBSTANCE which should be handled by trained staff only.



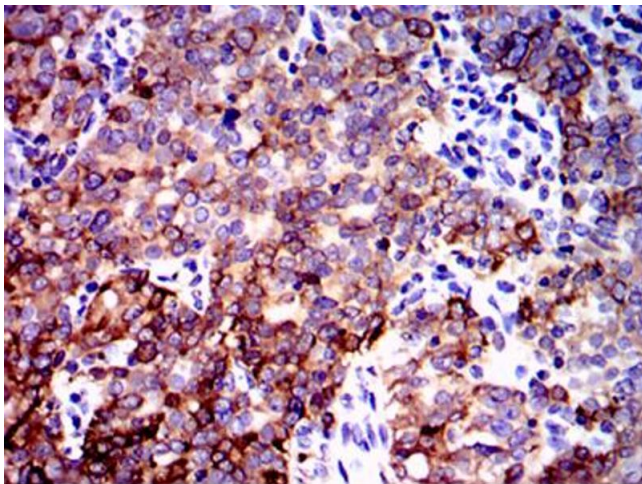
ELISA

Image 1.



Immunohistochemistry

Image 2.



Immunohistochemistry

Image 3.

Please check the [product details page](#) for more images. Overall 6 images are available for ABIN1108715.