



[Go to Product page](#)

Datasheet for ABIN1108810

anti-RAB25 antibody

2 Images

Overview

Quantity:	0.1 mL
Target:	RAB25
Reactivity:	Human
Host:	Mouse
Clonality:	Monoclonal
Conjugate:	This RAB25 antibody is un-conjugated
Application:	Western Blotting (WB), Immunohistochemistry (Paraffin-embedded Sections) (IHC (p)), Enzyme Immunoassay (EIA)

Product Details

Clone:	3F12F3
Isotype:	IgG2a
Specificity:	This antibody reacts to RAB25.
Cross-Reactivity (Details):	Species reactivity (tested):Human.
Purification:	Purified

Target Details

Target:	RAB25
Alternative Name:	RAB25 (RAB25 Products)
Background:	Members of the Ras-related superfamily of GTP binding proteins, which includes Ras, Rho, Rab

Target Details

and ARF subfamilies, exhibit 30-50 % similarity with Ras p21. Rab proteins play an important role for either in endocytosis or in biosynthetic protein transport. The possibility that Rab proteins might also direct the exocytosis from secretory vesicles to the plasma membrane is supported by the observation that in yeast, the SEC4 protein, which is 40 % similar to Rab proteins, is associated with secretory vesicles. Rab proteins located on the cytoplasmic face of organelles and vesicles, rab proteins are involved in intracellular membrane fusion reactions. Rab25 was cloned from a gastric parietal cell cDNA library and is expressed in epithelial tissues such as the gastrointestinal mucosae, kidney, and lung, which encoded a protein of 28 kDa. Synonyms: CATX-8, CATX8, Rab-25, Ras-related protein Rab-25

Gene ID: 57111

Application Details

Application Notes: Optimal working dilution should be determined by the investigator.

Restrictions: For Research Use only

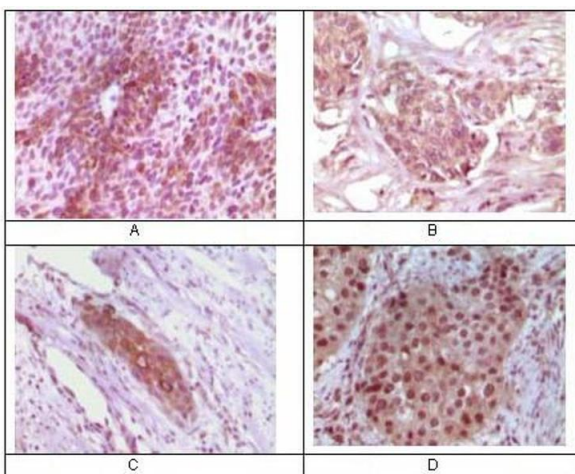
Handling

Buffer: PBS, 0,03 % sodium azide

Preservative: Sodium azide

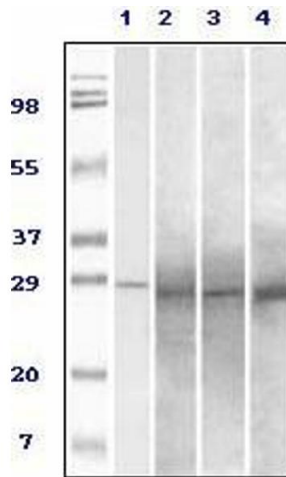
Precaution of Use: This product contains sodium azide: a POISONOUS AND HAZARDOUS SUBSTANCE which should be handled by trained staff only.

Images



Immunohistochemistry

Image 1.



Western Blotting

Image 2.