

Datasheet for ABIN1108896

anti-RPA1 antibody

5 Images

[Go to Product page](#)

Overview

Quantity:	0.1 mg
Target:	RPA1
Reactivity:	Human, Monkey
Host:	Mouse
Clonality:	Monoclonal
Conjugate:	This RPA1 antibody is un-conjugated
Application:	Western Blotting (WB), Immunofluorescence (IF), Flow Cytometry (FACS), Immunohistochemistry (Paraffin-embedded Sections) (IHC (p)), Enzyme Immunoassay (EIA)

Product Details

Clone:	4C4
Isotype:	IgG1
Specificity:	Recognizes RPA1
Cross-Reactivity (Details):	Species reactivity (tested): Human, Monkey.
Purification:	Purified

Target Details

Target:	RPA1
Alternative Name:	RPA1 (RPA1 Products)
Background:	This gene Plays an essential role in several cellular processes in DNA metabolism including

Target Details

replication, recombination and DNA repair. Binds and subsequently stabilizes single-stranded DNA intermediates and thus prevents complementary DNA from reannealing. Synonyms: REPA1, RF-A protein 1, RFA1, RP-A p70, RPA70, Replication factor A protein 1, Replication protein A, Replication protein A 70 kDa DNA-binding subunit, Single-stranded DNA-binding protein

Molecular Weight: 68.1 kDa

Gene ID: 6117

Pathways: [Telomere Maintenance](#), [DNA Damage Repair](#), [Mitotic G1-G1/S Phases](#), [DNA Replication](#), [Chromatin Binding](#), [Synthesis of DNA](#)

Application Details

Application Notes: Optimal working dilution should be determined by the investigator.

Restrictions: For Research Use only

Handling

Format: Liquid

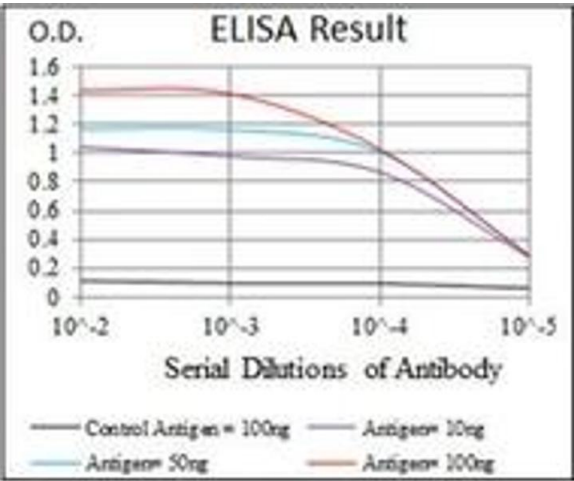
Concentration: 1.0 mg/mL

Buffer: PBS, 0.05 % Sodium Azide, 0.5 % protein stabilizer

Preservative: Sodium azide

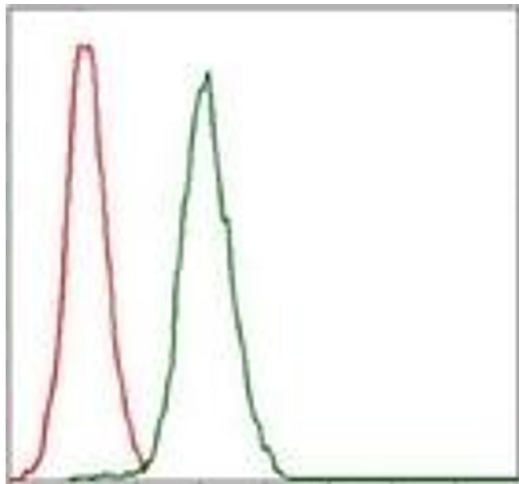
Precaution of Use: This product contains sodium azide: a POISONOUS AND HAZARDOUS SUBSTANCE which should be handled by trained staff only.

Images



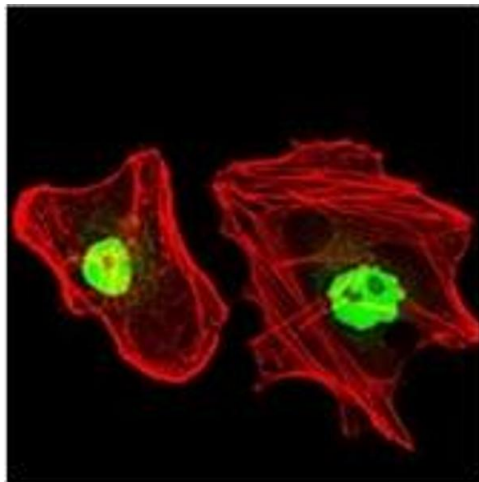
ELISA

Image 1.



Flow Cytometry

Image 2.



Immunofluorescence

Image 3.

Please check the [product details page](#) for more images. Overall 5 images are available for ABIN1108896.