

Datasheet for ABIN1108946

anti-SCN1A antibody[Go to Product page](#)**1** Image

Overview

Quantity:	0.1 mg
Target:	SCN1A
Reactivity:	Human, Rat, Mouse
Host:	Rabbit
Clonality:	Polyclonal
Conjugate:	This SCN1A antibody is un-conjugated
Application:	Western Blotting (WB), Immunohistochemistry (Frozen Sections) (IHC (fro)), Enzyme Immunoassay (EIA)

Product Details

Immunogen:	Synthetic peptide derived from SCN1A protein
Specificity:	This antibody reacts with 230 kDa SCN1A protein.
Cross-Reactivity (Details):	Species reactivity (tested): Human, Mouse and Rat.
Purification:	Affinity chromatography on Protein A

Target Details

Target:	SCN1A
Alternative Name:	SCN1A (SCN1A Products)
Background:	Synonyms: NAC1, SCN1, Sodium channel protein brain I subunit alpha, Sodium channel protein type 1 subunit alpha, Sodium channel protein type I subunit alpha, Voltage-gated sodium channel subunit alpha Nav1.1

Target Details

Gene ID:	6323
NCBI Accession:	NP_001159435

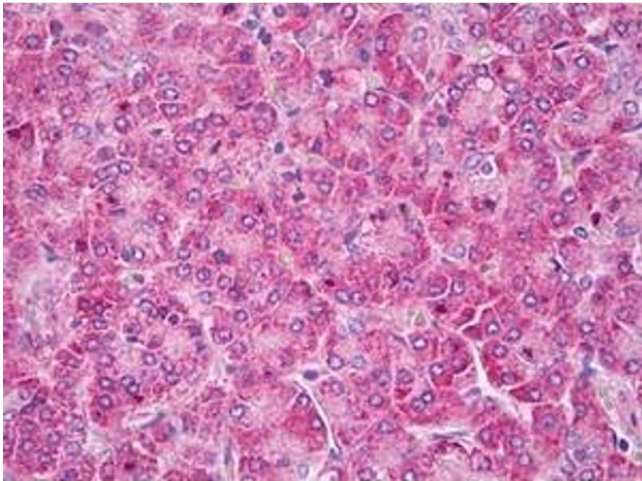
Application Details

Application Notes:	Optimal working dilution should be determined by the investigator.
Restrictions:	For Research Use only

Handling

Reconstitution:	Restore in distilled water.
Buffer:	Tris 0,1 M, glycine 0,1 M, sucrose 2 %
Handling Advice:	Avoid repeated freezing and thawing.
Storage:	4 °C/-20 °C
Storage Comment:	Prior to reconstitution store at -20 °C. Following reconstitution store undiluted at 2-8 °C for one month or (in aliquots) at -20 °C for longer.

Images



Immunohistochemistry (Paraffin-embedded Sections)

Image 1. Pancreas stained in IHC-P with SCN1A antibody