



[Go to Product page](#)

Datasheet for ABIN1109181  
**anti-Synaptophysin antibody**

3 Images

### Overview

Quantity:	0.1 mg
Target:	Synaptophysin (SYP)
Reactivity:	Human, Mouse
Host:	Mouse
Clonality:	Monoclonal
Conjugate:	This Synaptophysin antibody is un-conjugated
Application:	Western Blotting (WB), Immunohistochemistry (Paraffin-embedded Sections) (IHC (p))

### Product Details

Immunogen:	Purified synaptic vesicle fraction from guinea pig cerebrum
Clone:	171B5
Isotype:	IgG1
Specificity:	Reacts with human and mouse Synaptophysin.
Purification:	Protein A agarose

### Target Details

Target:	Synaptophysin (SYP)
Alternative Name:	Synaptophysin / SYP ( <a href="#">SYP Products</a> )
Background:	Synaptophysin (also referred to as SVP38 and p38) is an acidic Ca <sup>2+</sup> binding glycoprotein of about 38 kDa which exist largely in synaptic vesicles. It has 4 transmembrane regions and is

## Target Details

---

reported to be a major cholesterol-binding protein in synaptic vesicles. Synaptophysin may regulate synaptic exocytosis by competing with proteins such as SNAP25 and syntaxins to bind to synaptobrevin (vesicle-associated membrane protein, or VAMP). It may also participate in synaptic endocytosis, which contributes to rapid recycling of synaptic vesicle. Synonyms: Major synaptic vesicle protein p38, Neuroendocrine Marker

Gene ID: 6855

NCBI Accession: [NP\\_003170](#)

UniProt: [P08247](#)

Pathways: [Regulation of G-Protein Coupled Receptor Protein Signaling](#), [Regulation of long-term Neuronal Synaptic Plasticity](#)

## Application Details

---

Application Notes: Optimal working dilution should be determined by the investigator.

Restrictions: For Research Use only

## Handling

---

Concentration: 1.0 mg/mL

Buffer: PBS containing 50 % glycerol, pH 7.2. Contains no preservatives.

Preservative: Without preservative

Handling Advice: Avoid repeated freezing and thawing.

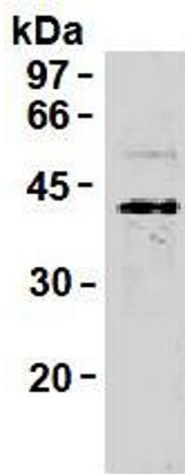
Storage: -20 °C

Storage Comment: Store (in aliquots) at -20 °C.



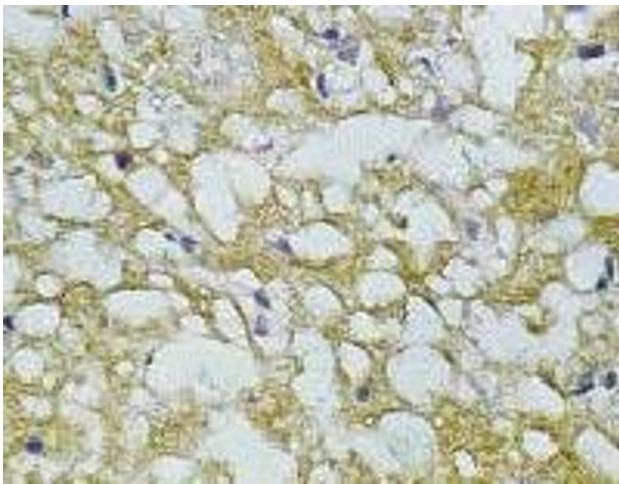
### Immunohistochemistry

Image 1.



### Western Blotting

Image 2.



### Immunohistochemistry

Image 3.