

Datasheet for ABIN1109361  
**anti-TSFM antibody (N-Term)**[Go to Product page](#)

## 2 Images

## Overview

Quantity:	100 µL
Target:	TSFM
Binding Specificity:	N-Term
Reactivity:	Human, Mouse, Rat, Cow, Dog, Zebrafish (Danio rerio), Xenopus laevis
Host:	Rabbit
Clonality:	Polyclonal
Conjugate:	This TSFM antibody is un-conjugated
Application:	Western Blotting (WB), Immunohistochemistry (Paraffin-embedded Sections) (IHC (p))

## Product Details

Immunogen:	The immunogen for anti-TSFM antibody: synthetic peptide directed towards the N terminal of human TSFM.
Sequence:	KQAEIWLHKE AQKEGWSKAA KLQGRKTKEG LIGLLQEGNT TVLVEVNCET
Cross-Reactivity (Details):	Species reactivity (expected): Mouse, Rat, Dog, African clawed frog, Bovine, Zebrafish Species reactivity (tested): Human
Purification:	Purified using peptide immunoaffinity column

## Target Details

Target:	TSFM
Alternative Name:	TSFM ( <a href="#">TSFM Products</a> )

## Target Details

Background:	The TSFM gene encodes a protein that is expressed in all tissues, with the highest levels of expression in skeletal muscle, liver, and kidney. It associates with the EF-Tu.GDP complex and induces the exchange of GDP to GTP. It remains bound to the aminoacyl-tRNA.EF-Tu.GTP complex up to the GTP hydrolysis stage on the ribosome. Defects in TSFM are the cause of combined oxidative phosphorylation deficiency type 3 (COXPD3). Defects in the mitochondrial oxidative phosphorylation system result in devastating, mainly multisystem, diseases. COXPD3 symptoms include severe metabolic acidosis with encephalomyopathy or with hypertrophic cardiomyopathy. Patients show a severe defect in mitochondrial translation leading to a failure to assemble adequate amounts of three of the oxidative phosphorylation complexes.Synonyms: EF-Ts, EF-TsMt, Elongation factor Ts mitochondrial
-------------	---------------------------------------------------------------------------------------------------------------------------------------------------------------------------------------------------------------------------------------------------------------------------------------------------------------------------------------------------------------------------------------------------------------------------------------------------------------------------------------------------------------------------------------------------------------------------------------------------------------------------------------------------------------------------------------------------------------------------------------------------------------------------------------------------------------------------------------------------------------------------------------------------------

Gene ID:	10102
----------	-------

NCBI Accession:	<a href="#">NP_005717</a>
-----------------	---------------------------

## Application Details

Application Notes:	Optimal working dilution should be determined by the investigator.
--------------------	--------------------------------------------------------------------

Restrictions:	For Research Use only
---------------	-----------------------

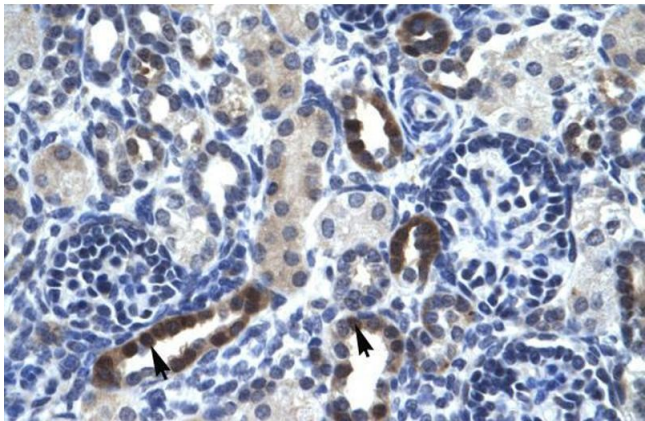
## Handling

Reconstitution:	Add 50 µL of distilled water to a final concentration of 1 mg/mL.
-----------------	-------------------------------------------------------------------

Handling Advice:	Avoid repeated freezing and thawing.
------------------	--------------------------------------

Storage:	4 °C/-20 °C
----------	-------------

Storage Comment:	Store lyophilized at 2-8 °C or at -20 °C long term. After reconstitution store the antibody undiluted at 2-8 °C for up to one month or in aliquots at -20 °C long term.
------------------	-------------------------------------------------------------------------------------------------------------------------------------------------------------------------



#### Immunohistochemistry

**Image 1.** Human kidney; TSFM antibody - N-terminal region in Human kidney cells using Immunohistochemistry



#### Western Blotting

**Image 2.** Human Liver; WB Suggested Anti-TSFM Antibody Titration: 0.2-1 ug/ml. Positive Control: Human Liver; TSFM antibody - N-terminal region in Human Liver cells using Western Blot