

Datasheet for ABIN1109470
**anti-GC-Rich Promoter Binding Protein 1 (GPBP1) (N-Term)
antibody**

[Go to Product page](#)

2 Images

Overview

Quantity:	100 µL
Target:	GC-Rich Promoter Binding Protein 1 (GPBP1)
Binding Specificity:	N-Term
Reactivity:	Mouse, Human, Rat, Cow, Dog, Chicken
Host:	Rabbit
Clonality:	Polyclonal
Conjugate:	Un-conjugated
Application:	Western Blotting (WB), Immunohistochemistry (Paraffin-embedded Sections) (IHC (p))

Product Details

Immunogen:	The immunogen for anti-Vasculinantibody: synthetic peptide directed towards the N terminal of human Vasculin
Sequence:	RKEKNGWRTH GRNGTENINH RGGYHGGSSR SRSSIFHAGK SQGLHENNIP
Cross-Reactivity (Details):	Species reactivity (expected):Mouse, Rat, Bovine, Dog, ChickenSpecies reactivity (tested):Human
Purification:	Purified using peptide immunoaffinity column

Target Details

Target:	GC-Rich Promoter Binding Protein 1 (GPBP1)
Alternative Name:	Vasculin (GPBP1 Products)

Target Details

Background: Vasculin is a novel vascular protein differentially expressed in human atherogenesis. It functions as a GC-rich promoter-specific transactivating transcription factor and interacts with GTF2B, GTF2F2, RNA polymerase II and TBP. Widely expressed. Synonyms: GC-rich promoter-binding protein 1, GPBP, GPBP1, SSH6, Vascular wall-linked protein

Gene ID: 65056

NCBI Accession: [NP_075064](#)

Application Details

Application Notes: Optimal working dilution should be determined by the investigator.

Restrictions: For Research Use only

Handling

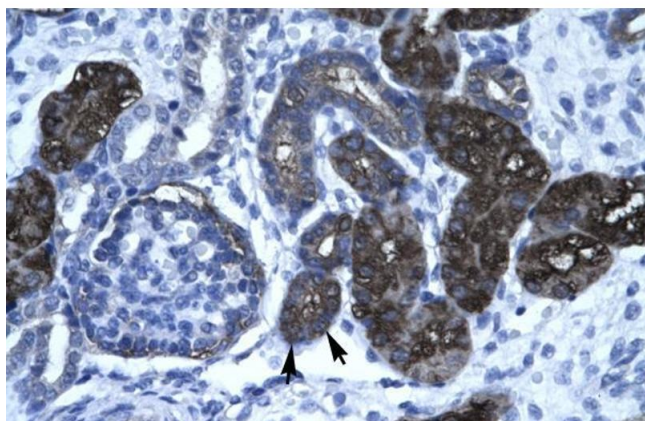
Reconstitution: Add 50 µL of distilled water to a final concentration of 1 mg/mL.

Handling Advice: Avoid repeated freezing and thawing.

Storage: 4 °C/-20 °C

Storage Comment: Store lyophilized at 2-8 °C or at -20 °C long term. After reconstitution store the antibody undiluted at 2-8 °C for up to one month or in aliquots at -20 °C long term.

Images



Immunohistochemistry

Image 1. Human kidney; DKFZP761C169 antibody - N-terminal region in Human kidney cells using Immunohistochemistry



Western Blotting

Image 2. Human HepG2; WB Suggested Anti-DKFZP761C169 Antibody Titration: 0.2-1 ug/ml. Positive Control: HepG2 cell lysate; DKFZP761C169 antibody - N-terminal region in Human HepG2 cells using Western Blot