



[Go to Product page](#)

Datasheet for ABIN112140 **anti-CD42a antibody (PE)**

1 Image

Overview

Quantity:	100 tests
Target:	CD42a (GP9)
Reactivity:	Human
Host:	Mouse
Clonality:	Monoclonal
Conjugate:	This CD42a antibody is conjugated to PE
Application:	Flow Cytometry (FACS), Immunofluorescence (IF)

Product Details

Clone:	GR-P
Isotype:	IgG2a
Characteristics:	Monoclonal Mouse Anti-Human CD42a, is recommended for use in flow cytometry for identification of Platelets and Megakaryocytes.

Target Details

Target:	CD42a (GP9)
Alternative Name:	CD42a (GP9 Products)
Background:	Platelet glycoprotein IX (GP9) is a small membrane glycoprotein found on the surface of human platelets. It forms a 1-to-1 noncovalent complex with glycoprotein Ib (GP Ib), a platelet surface membrane glycoprotein complex that functions as a receptor for von Willebrand factor (VWF). The main portion of the receptor is a heterodimer composed of 2 polypeptide chains, an alpha

Target Details

chain (GP1BA) and a beta chain (GP1BB), that are linked by disulfide bonds. The complete receptor complex includes noncovalent association of the alpha and beta subunits with GP9 and platelet glycoprotein V (GP5)

Application Details

Application Notes:	It is recommended for use in flow cytometry. This reagent is effective for direct immunofluorescence staining of human tissue for flow cytometric analysis using 20 µl/10 ⁶ cells.
Comment:	R-Phycoerythrin (Europa Bioproducts, Ely, Cambridge)
Assay Procedure:	Procedure for preparation of PLATELETS: 1. Centrifuge tube of freshly drawn EDTA blood (600rpm or 75xg, 20') 2. Remove platelets (top layer) and wash twice over in PBS and resuspend in PBS. 3. Add 20 µl of CD42a PE and mix gently with a vortex mixer. The 20 µl is a guideline only, the optimal volume should be determined by the individual laboratory. 4. The recommended negative control is a non-reactive PE-conjugated antibody of the same isotype. 5. Incubate in the dark at room temperature at 4°C for 30 minutes or at room temperature (20-25 °C) for 15 minutes. 6. Analyse on a flow cytometer.
Restrictions:	For Research Use only

Handling

Format:	Liquid
Buffer:	The conjugate is provided in liquid form in buffer containing 1% bovine serum albumin (BSA) and 0,09% Sodium azide, pH 7.2.
Preservative:	Sodium azide
Precaution of Use:	1. The device is not intended for clinical use including diagnosis, prognosis, and monitoring of a disease state, and it must not be used in conjunction with patient records or treatment. 2. This product contains Sodium azide (NaN ₃), a chemical highly toxic in pure form. At product concentrations, though not classified as hazardous, Sodium azide may react with lead and copper plumbing to form highly explosive build-ups of metal azides. Upon disposal, flush with large volumes of water to prevent metal azide build-up in plumbing. 3. As with any product derived from biological sources, proper handling procedures should be used.
Storage:	4 °C

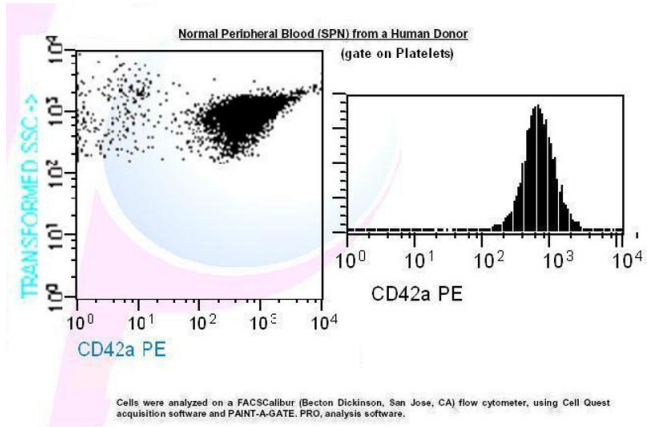


Image 1.