

Datasheet for ABIN1112816
anti-KIDINS220 antibody



[Go to Product page](#)

1 Image

Overview

Quantity:	100 µg
Target:	KIDINS220
Reactivity:	Mouse
Host:	Mouse
Clonality:	Monoclonal
Conjugate:	This KIDINS220 antibody is un-conjugated
Application:	Western Blotting (WB), Immunocytochemistry (ICC)

Product Details

Immunogen:	Recombinant Kidins 220 protein.
Clone:	K23
Isotype:	IgG1

Target Details

Target:	KIDINS220
Alternative Name:	Kinase D-Interacting Substrate 220, Kidins 220 (KIDINS220 Products)
Background:	Protein kinase D (PKD) is a serine/threonine kinase regulated by diacylglycerol signaling pathways with unique domain composition and enzymatic properties, still awaiting identification of its specific substrate(s). Kinase D-interacting substrate 220(Kidins220) is an enzyme that in humans is encoded by the KIDINS220 gene. It is an integral membrane protein selectively expressed in brain and neuroendocrine cells, where it concentrates at the tip of

Target Details

neurites. and it contains 11 ankyrin repeats and four transmembrane domains within the N-terminal region.

Application Details

Application Notes:	WB (1:500-1000), ICC (1:100-500). Other applications have not been tested. The optimal dilutions should be determined by end user.
Restrictions:	For Research Use only

Handling

Format:	Liquid
Buffer:	TBS (pH7.4), 0.5% BSA, 40% Glycerol and 0.05% Sodium Azide.
Preservative:	Sodium azide, Thimerosal (Merthiolate)
Storage:	4 °C/-20 °C
Storage Comment:	Store at 4 °C after thawing (1 week). Aliquot and store at -20 °C for long term (at least one year). Avoid repeated freeze and thaw cycles.
Expiry Date:	12 months

Images

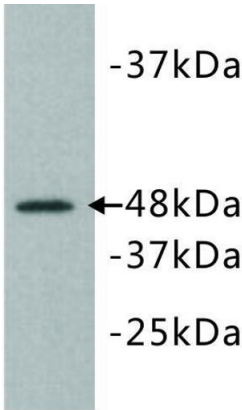


Image 1.

WB: Recombinant protein