

Datasheet for ABIN1112817

## anti-Ceramide Synthase 2 antibody



[Go to Product page](#)

### 1 Image

#### Overview

Quantity:	100 µg
Target:	Ceramide Synthase 2 (CERS2)
Reactivity:	Human
Host:	Mouse
Clonality:	Monoclonal
Conjugate:	This Ceramide Synthase 2 antibody is un-conjugated
Application:	Western Blotting (WB)

#### Product Details

Immunogen:	A synthetic peptide (conjugated with KLH) corresponding to the extracellular region of human LASS2 .
Clone:	N39
Isotype:	IgG2b

#### Target Details

Target:	Ceramide Synthase 2 (CERS2)
Alternative Name:	LAG1 longevity assurance homolog 2, LASS2 ( <a href="#">CERS2 Products</a> )
Background:	Lass2 (LAG1 longevity assurance homolog 2) is a protein that in humans is encoded by the LASS2 gene. It has sequence similarity to yeast longevity assurance gene 1. And it is highly expressed in liver and kidney, which is very different from the expression of the previously identified human LAG1 homologue LAG1Hs-1. Mutation or overexpression of the related gene

Target Details

in yeast has been shown to alter yeast lifespan. LASS2 protein was able to inhibit the colony formation of human hepatoma cells in vitro, and it also plays a role in the regulation of cell growth.

Application Details

Application Notes:	WB (1:500-1000). Other applications have not been tested. The optimal dilutions should be determined by end user.
Restrictions:	For Research Use only

Handling

Format:	Liquid
Buffer:	TBS (pH7.4), 0.5% BSA, 40% Glycerol and 0.05% Sodium Azide.
Preservative:	Sodium azide, Thimerosal (Merthiolate)
Storage:	4 °C/-20 °C
Storage Comment:	Store at 4 °C after thawing (1 week). Aliquot and store at -20 °C for long term (at least one year). Avoid repeated freeze and thaw cycles.
Expiry Date:	12 months

Images

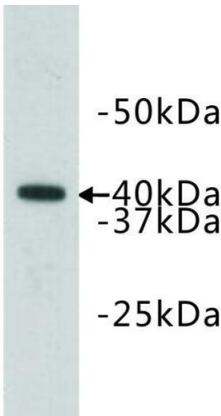


Image 1.

WB: K562-AO2 cell lysate