

Datasheet for ABIN1112923

**anti-DOPEY2 antibody**[Go to Product page](#)**1** Image

## Overview

Quantity:	100 µg
Target:	DOPEY2
Reactivity:	Mouse
Host:	Rabbit
Clonality:	Polyclonal
Application:	Western Blotting (WB)

## Product Details

Isotype:	IgG
Purification:	affinity purified

## Target Details

Target:	DOPEY2
Alternative Name:	Protein dopey-2 ( <a href="#">DOPEY2 Products</a> )
Background:	Protein dopey-2 (DOPEY2), also called C21ORF5, is a member of Dopey family involved in morphogenesis. It is expressed in all human tissues, namely brain, spinal cord, liver, pancreas, kidney, spleen, heart, lung, skeletal muscle, testis, ovary, fetal brain, and fetal liver. It have demonstrated to be overexpressed in Down syndrome tissues, as a candidate gene for trisomy 21.
Pathways:	<a href="#">Maintenance of Protein Location</a>

## Application Details

Application Notes:	WB (1:250-500). Other applications have not been tested. The optimal dilutions should be determined by end user.
Restrictions:	For Research Use only
Handling	
Format:	Liquid
Buffer:	TBS (pH7.4), 0.5% BSA, 40% Glycerol and 0.05% Sodium Azide.
Preservative:	Sodium azide, Thimerosal (Merthiolate)
Storage:	4 °C/-20 °C
Storage Comment:	Store at 4 °C after thawing (1 week). Aliquot and store at -20 °C for long term (at least one year). Avoid repeated freeze and thaw cycles.
Expiry Date:	12 months

## Images

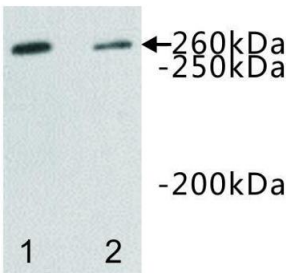


Image 1.

WB: Lane 1: human brain tissue lysate  
Lane 2: mouse brain tissue lysate