

Datasheet for ABIN1112925  
**anti-FAT1 antibody**



[Go to Product page](#)

1 Image

## Overview

Quantity:	100 µg
Target:	FAT1
Reactivity:	Human
Host:	Rabbit
Clonality:	Polyclonal
Conjugate:	This FAT1 antibody is un-conjugated
Application:	Western Blotting (WB), Immunocytochemistry (ICC)

## Product Details

Isotype:	IgG
Purification:	affinity purified

## Target Details

Target:	FAT1
Alternative Name:	Protocadherin Fat 1 ( <a href="#">FAT1 Products</a> )

**Background:** Protocadherin Fat 1 is a protein that in humans is encoded by the FAT1 gene. This gene is an ortholog of the Drosophila fat gene, which encodes a tumor suppressor essential for controlling cell proliferation during Drosophila development. It is expressed at high levels in a number of fetal epithelia. The protein is a new member of the human cadherin superfamily, a group of integral membrane proteins characterized by the presence of cadherin-type repeats. And it's important in developmental processes and cell communication.

Application Details

Application Notes:	WB (1:2000-5000), ICC (1:100). Other applications have not been tested. The optimal dilutions should be determined by end user.
Restrictions:	For Research Use only

Handling

Format:	Liquid
Buffer:	TBS (pH7.4), 0.5% BSA, 40% Glycerol and 0.05% Sodium Azide.
Preservative:	Sodium azide, Thimerosal (Merthiolate)
Storage:	4 °C/-20 °C
Storage Comment:	Store at 4 °C after thawing (1 week). Aliquot and store at -20 °C for long term (at least one year). Avoid repeated freeze and thaw cycles.
Expiry Date:	12 months

Images

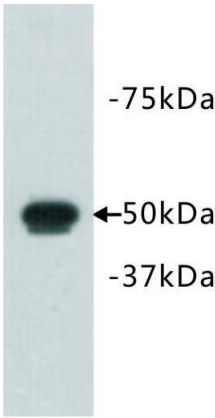


Image 1.

WB: recombinant protein lysate