



[Go to Product page](#)

Datasheet for ABIN1112927

## anti-REM2 antibody

### 3 Images

#### Overview

Quantity:	100 µg
Target:	REM2
Reactivity:	Mouse
Host:	Rabbit
Clonality:	Polyclonal
Application:	Western Blotting (WB), Immunohistochemistry (IHC), Immunocytochemistry (ICC), Immunohistochemistry (Paraffin-embedded Sections) (IHC (p))

#### Product Details

Isotype:	IgG
Purification:	affinity purified

#### Target Details

Target:	REM2
Alternative Name:	REM 2 ( <a href="#">REM2 Products</a> )
Background:	The RGK family of RAS-like GTP-binding proteins, including REM1, REM2, RAD, and GEM, share unique structural and biochemical properties. It Binds GTP saturably and exhibits a low intrinsic rate of GTP hydrolysis.

#### Application Details

Application Notes:	WB (1:1000), IHC-P (1:200-400), ICC (1:20). Immunocytochemistry, ICC (1:20) Other
--------------------	---

## Application Details

applications have not been tested. The optimal dilutions should be determined by end user.

Restrictions: For Research Use only

## Handling

Format: Liquid

Buffer: TBS (pH7.4), 0.5% BSA, 40% Glycerol and 0.05% Sodium Azide.

Preservative: Sodium azide, Thimerosal (Merthiolate)

Storage: 4 °C/-20 °C

Storage Comment: Store at 4 °C after thawing (1 week). Aliquot and store at -20 °C for long term (at least one year).  
Avoid repeated freeze and thaw cycles.

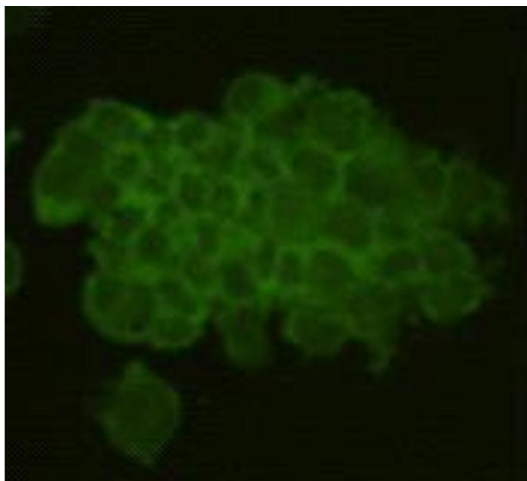
Expiry Date: 12 months

## Images



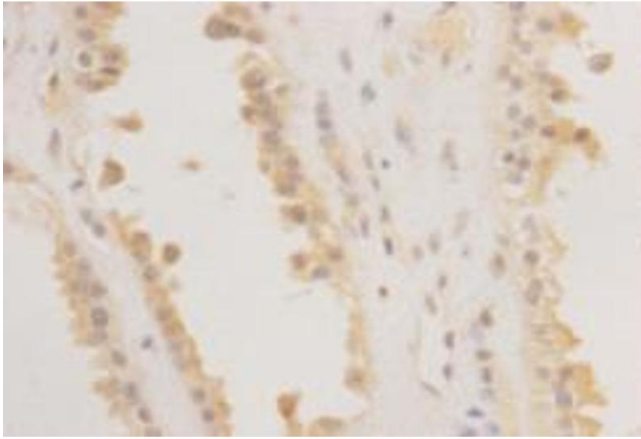
WB: NCCIT cell lysate

Image 1.



Immunocytochemistry

Image 2.



**Immunohistochemistry (Paraffin-embedded Sections)**

**Image 3.**