

Datasheet for ABIN1113181

anti-HCP antibody[Go to Product page](#)**1** Image

Overview

Quantity:	100 µL
Target:	HCP
Reactivity:	Chinese Hamster
Host:	Rabbit
Clonality:	Polyclonal
Conjugate:	This HCP antibody is un-conjugated
Application:	Western Blotting (WB), ELISA

Product Details

Immunogen:	whole cell lysate of CHO-K1 cells
Specificity:	HCP from CHO cells
Characteristics:	Detection of Host Cell Proteins. Expression system CHO cells
Purification:	Crude serum

Target Details

Target:	HCP
Alternative Name:	Host Cell Proteins (HCP Products)
Background:	Rabbit polyclonal serum anti-Host Cell Proteins (CHO cells)

Application Details

Application Notes: ELISA: Use at an assay dependent dilution.
WB: 1:500 to 1: 2000

Restrictions: For Research Use only

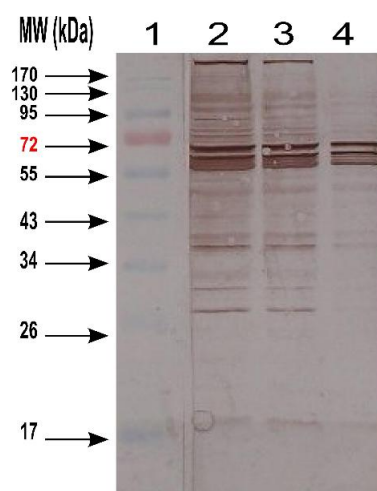
Handling

Format: Liquid

Preservative: Without preservative

Storage: 4 °C

Images



Western Blotting

Image 1. Western-blotting of CHO cell Lysate