

Datasheet for ABIN1113183
anti-HCP antibody



[Go to Product page](#)

1 Image

Overview

Quantity:	100 µL
Target:	HCP
Reactivity:	E. coli
Host:	Rabbit
Clonality:	Polyclonal
Conjugate:	This HCP antibody is un-conjugated
Application:	Western Blotting (WB)

Product Details

Immunogen:	Lysate of E coli BL21 cells
Specificity:	HCP from E coli BL21
Characteristics:	Detection of Host Cell Proteins. Expression system E.coli (BL21)
Purification:	Crude serum

Target Details

Target:	HCP
Alternative Name:	Host Cell Proteins (HCP Products)
Background:	Rabbit polyclonal serum raised against Escherichia coli total proteins (BL21 strain).

Application Details

Restrictions: For Research Use only

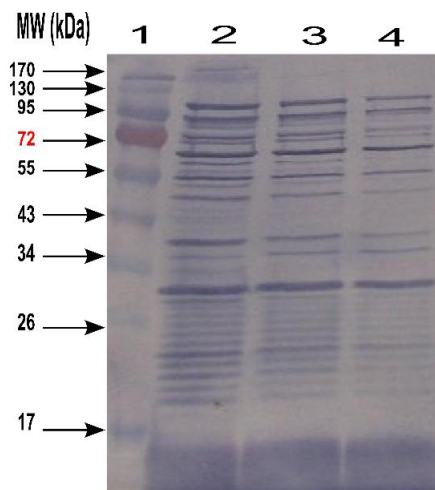
Handling

Format: Liquid

Preservative: Without preservative

Storage: 4 °C

Images



Western Blotting

Image 1. Western-blotting of E coli cell Lysate