

Datasheet for ABIN1118478

## Goat anti-Mouse IgG2a (Heavy Chain) Antibody (FITC) - Preadsorbed



[Go to Product page](#)

1 Image

3 Publications

### Overview

Quantity:	1 mg
Target:	IgG2a
Binding Specificity:	Heavy Chain
Reactivity:	Mouse
Host:	Goat
Clonality:	Polyclonal
Conjugate:	FITC
Application:	Flow Cytometry (FACS), Immunohistochemistry (IHC), Western Blotting (WB), FLISA, Fluorescence Microscopy (FM)

### Product Details

Immunogen:	Immunogen: Mouse IgG2a heavy chain Immunogen Type: Native Protein
Isotype:	IgG
Specificity:	Assay by immunoelectrophoresis resulted in a single precipitin arc against anti-Goat Serum, Mouse Serum and Mouse IgG2a. Specificity was confirmed by ELISA at less than 1 % cross-reactivity against other mouse heavy or light chain isotypes.
Cross-Reactivity:	Mouse (Murine)
Characteristics:	Mouse IgG2a secondary antibody is available in a variety of formats. FITC Conjugated Secondary Antibodies are designed for immunofluorescence microscopy, fluorescence based plate assays (FLISA) and fluorescent western blotting. This product is also suitable for

## Product Details

---

multiplex analysis, including multicolor imaging, utilizing various commercial platforms.

Purification: Preadsorption: Solid phase absorption

Labeling Ratio: 5.2

## Target Details

---

Target: IgG2a

Abstract: [IgG2a Products](#)

Target Type: Antibody

Background: Synonyms: goat anti-MOUSE IgG2a Antibody fluorescein Conjugation, goat anti-Mouse IgG2a (gamma 2a) FITC Conjugated Antibody

Background: Anti-Mouse IgG2a Fluorescein Antibody generated in goat detects reactivity to Mouse IgG2a (Gamma 2a chain). Secreted as part of the adaptive immune response by plasma B cells, immunoglobulin G constitutes 75 % of serum immunoglobulins. IgG2, the second largest of IgG isotypes, comprises almost 25 % of IgG and has a low affinity for binding to the Fc receptor of phagocytic cells. Secondary Antibodies are available in a variety of formats and conjugate types. When choosing a secondary antibody product, consideration must be given to species and immunoglobulin specificity, conjugate type, fragment and chain specificity, level of cross-reactivity, and host-species source and fragment composition.

## Application Details

---

Application Notes: Immunohistochemistry Dilution: 1:1,000 - 1:5,000

Application Note: Mouse IgG2a secondary antibody is available in a variety of formats. FITC Conjugated Secondary Antibodies are designed for immunofluorescence microscopy, fluorescence based plate assays (FLISA) and fluorescent western blotting. This product is also suitable for multiplex analysis, including multicolor imaging, utilizing various commercial platforms.

FLISA Dilution: 1:10,000 - 1:50,000

Flow Cytometry Dilution: 1:200 - 1:500

Western Blot Dilution: 1:2,000 - 1:10,000

IF Microscopy Dilution: 1:1,000 - 1:5,000

Comment: Excitation/Emission wavelength: 494 nm/514 nm

Restrictions: For Research Use only

## Handling

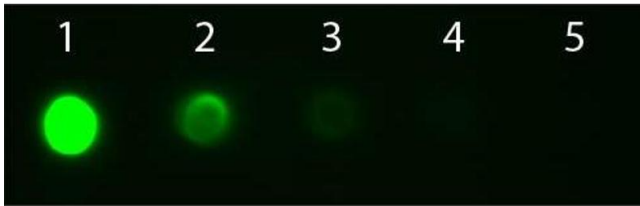
---

Reconstitution:	Reconstitution Volume: 1.0 mL Reconstitution Buffer: Restore with deionized water (or equivalent)
Concentration:	1.7 mg/mL
Buffer:	Buffer: 0.02 M Potassium Phosphate, 0.15 M Sodium Chloride, pH 7.2 Stabilizer: 10 mg/mL Bovine Serum Albumin (BSA) - Immunoglobulin and Protease free Preservative: 0.01 % (w/v) Sodium Azide
Preservative:	Sodium azide
Precaution of Use:	This product contains Sodium azide: a POISONOUS AND HAZARDOUS SUBSTANCE which should be handled by trained staff only.
Handling Advice:	Product is photosensitive and should be protected from light. Centrifuge product if not completely clear after standing at room temperature.
Storage:	RT, 4 °C, -20 °C
Storage Comment:	Store vial at 4 °C prior to restoration. For extended storage aliquot contents and freeze at -24 °C or below. This product is stable for several weeks at 4 °C as an undiluted liquid.
Expiry Date:	12 months

## Publications

---

Product cited in:	<p>Musante, Li, Kanyo, Lam, Colangelo, Cheng, Brody, Greengard, Le Novère, Nairn: "Reciprocal regulation of ARPP-16 by PKA and MAST3 kinases provides a cAMP-regulated switch in protein phosphatase 2A inhibition." in: <b>eLife</b>, Vol. 6, (2018) (<a href="#">PubMed</a>).</p> <p>Carlyle, Kitchen, Kanyo, Voss, Pletikos, Sousa, Lam, Gerstein, Sestan, Nairn: "A multiregional proteomic survey of the postnatal human brain." in: <b>Nature neuroscience</b>, Vol. 20, Issue 12, pp. 1787-1795, (2017) (<a href="#">PubMed</a>).</p> <p>Andrade, Musante, Horiuchi, Matsuzaki, Brody, Wu, Greengard, Taylor, Nairn: "ARPP-16 Is a Striatal-Enriched Inhibitor of Protein Phosphatase 2A Regulated by Microtubule-Associated Serine/Threonine Kinase 3 (Mast 3 Kinase)." in: <b>The Journal of neuroscience : the official journal of the Society for Neuroscience</b>, Vol. 37, Issue 10, pp. 2709-2722, (2017) (<a href="#">PubMed</a>).</p>
-------------------	---



#### Dot Blot

**Image 1.** Dot Blot of Goat anti-Mouse IgG2a Antibody Fluorescein Conjugated Pre-absorbed. Antigen: Mouse IgG2a. Load: Lane 1 - 100 ng Lane 2 - 33.3 ng Lane 3 - 11.1 ng Lane 4 - 3.70 ng Lane 5 - 1.23 ng. Primary antibody: n/a. Secondary antibody: Goat anti-Mouse IgG2a Antibody Fluorescein Conjugated Pre-absorbed at 1:1,000 for 60 min at RT. Block: ABIN925618 for 60 min at RT.