

Datasheet for ABIN113331
anti-ITM2B antibody (N-Term)



[Go to Product page](#)

1 Image

Overview

Quantity:	0.2 mg
Target:	ITM2B
Binding Specificity:	N-Term
Reactivity:	Human
Host:	Chicken
Clonality:	Polyclonal
Conjugate:	This ITM2B antibody is un-conjugated
Application:	Western Blotting (WB), Immunohistochemistry (Frozen Sections) (IHC (fro))

Product Details

Immunogen:	Peptide coupled to carrier protein. Amino terminal sequence of BRI protein (ITM2B)
Purification:	Affinity chromatography.

Target Details

Target:	ITM2B
Alternative Name:	ITM2B (ITM2B Products)
Background:	This antibody has been developed against the amino terminal sequence of BRI protein (ITM2B), a type-II single spanning transmembrane protein found in brain and other tissues. Mutation of the BRI gene with concomitant elongation of the carboxy terminus and its cleavage by the protease furin has been shown to lead to deposition of a protein fragment that may be involved in the pathogenesis of familial British dementia. Synonyms: BRI, BRI2, ITM2B, Integral

Target Details

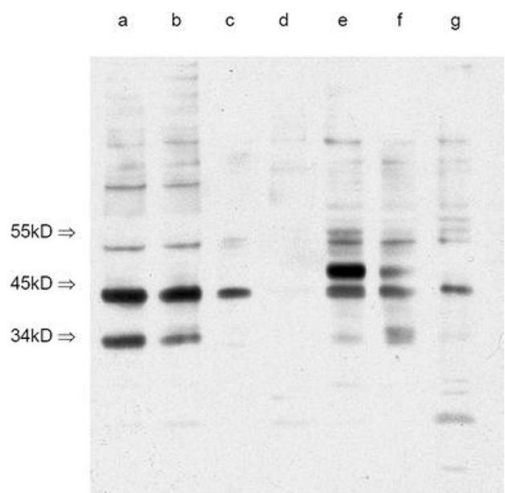
	membrane protein 2B, Transmembrane protein BRI
Gene ID:	9445
NCBI Accession:	NP_068839
UniProt:	Q9Y287

Application Details

Application Notes:	Suitable for Western blot and not recommended for Immunohistochemistry. Other applications not tested. Optimal dilutions are dependent on conditions and should be determined by the user.
Restrictions:	For Research Use only

Handling

Concentration:	1.0 mg/mL
Buffer:	Phosphate buffered saline, pH 7.2 with 0.09 % sodium azide as preservative.
Preservative:	Sodium azide
Precaution of Use:	This product contains sodium azide: a POISONOUS AND HAZARDOUS SUBSTANCE which should be handled by trained staff only.
Storage:	4 °C/-20 °C
Storage Comment:	Store the antibody at 2-8 °C for one month or (following reconstitution in aliquots) at -20 °C for longer.



Western Blotting

Image 1. Figure 1. Western Blot of various organs stained with anti BRI (ITM2B), N-terminal B6 mouse strain.