

Datasheet for ABIN1169015
anti-TIM3 antibody



[Go to Product page](#)

1 Image

Overview

Quantity:	100 µg
Target:	TIM3 (TIM 3)
Reactivity:	Mouse
Host:	Rat
Clonality:	Monoclonal
Conjugate:	This TIM3 antibody is un-conjugated
Application:	Western Blotting (WB), ELISA

Product Details

Immunogen:	Recombinant mouse Tim-3.
Clone:	TI 339H
Isotype:	IgG2a
Specificity:	Recognizes mouse Tim-3.
Cross-Reactivity:	Mouse (Murine)
Sterility:	0.2 µm filtered

Target Details

Target:	TIM3 (TIM 3)
Alternative Name:	Tim-3 (TIM 3 Products)
Target Type:	Virus

Target Details

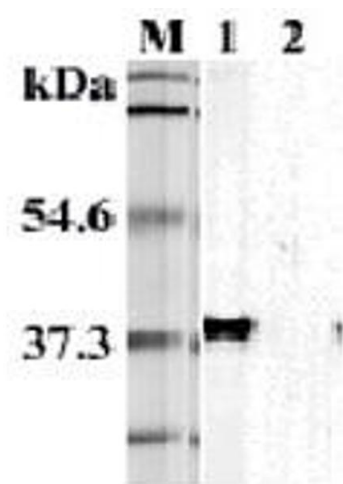
Background:	Tim-3 is a Th1-specific cell surface protein. It is expressed selectively by differentiated CD4+Th1 and CD8+Tc1 cells, but is absent on CD4+Th2 and CD8+ Tc2 cells. The Tim gene family has an important role in the regulation of autoimmunity and allergies.
UniProt:	Q8VIM0
Pathways:	Regulation of Lipid Metabolism by PPARalpha , Cancer Immune Checkpoints

Application Details

Application Notes:	Optimal working dilution should be determined by the investigator.
Restrictions:	For Research Use only

Handling

Format:	Liquid
Concentration:	Lot specific
Buffer:	0.2µm-filtered solution in PBS, pH 7.4. Contains no preservatives.
Preservative:	Without preservative
Storage:	4 °C,-20 °C
Storage Comment:	Short Term Storage: +4°C Long Term Storage: -20°C Stable for at least 1 year after receipt when stored at -20°C.
Expiry Date:	12 months



Western Blotting

Image 1. Western blot analysis using anti-TIM-3 (mouse), mAb (TI 339H) at 1:5'000 dilution. 1: Transfected mouse Tim-3 full length cell lysate (HEK 293). 2: Transfected vector only cell lysate.