

Datasheet for ABIN1169115

anti-GPX3 antibody[Go to Product page](#)**1** Image

Overview

| | |
|--------------|-------------------------------------|
| Quantity: | 100 µg |
| Target: | GPX3 |
| Reactivity: | Mouse |
| Host: | Rabbit |
| Clonality: | Polyclonal |
| Conjugate: | This GPX3 antibody is un-conjugated |
| Application: | Western Blotting (WB), ELISA |

Product Details

| | |
|-----------------------------|--|
| Immunogen: | Recombinant mouse GPX3. |
| Specificity: | Recognizes mouse GPX3. Detects a band of ~20-27 kDa by Western blot. |
| Cross-Reactivity: | Mouse (Murine) |
| Cross-Reactivity (Details): | Weakly cross-reacts with human GPX3. |
| Sterility: | 0.2 µm filtered |

Target Details

| | |
|-------------------|--|
| Target: | GPX3 |
| Alternative Name: | GPX3 (GPX3 Products) |
| Background: | Glutathione peroxidase 3 (GPX3, GSHPX3) is a selenium-dependent extracellular enzyme, protecting cells and enzymes from oxidative damage by catalyzing the reduction of hydrogen |

Target Details

peroxide, lipid peroxides and organic hydroperoxides. GPX3 is involved in inflammatory bowel disease, in asthma and in diabetes. The activity of GPX3 is significantly reduced in the plasma and tissue of cancer patients. Recently, GPX3 was suggested to serve as a molecular marker for the diagnosis of clear cell type ovarian adenocarcinoma.

UniProt: [P46412](#)

Pathways: [Thyroid Hormone Synthesis](#)

Application Details

Application Notes: Optimal working dilution should be determined by the investigator.

Restrictions: For Research Use only

Handling

Format: Liquid

Concentration: Lot specific

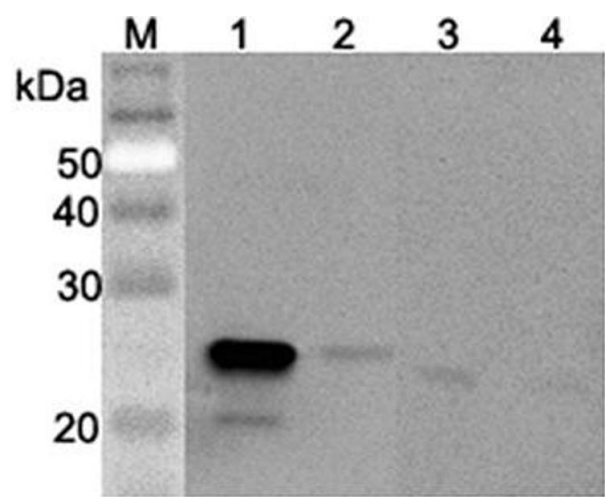
Buffer: 0.2µm-filtered solution in PBS, pH 7.4. Contains no preservatives.

Preservative: Without preservative

Storage: 4 °C, -20 °C

Storage Comment: Short Term Storage: +4°C
Long Term Storage: -20°C
Stable for at least 6 months after receipt when stored at -20°C.

Expiry Date: 6 months



Western Blotting

Image 1. Western blot analysis using anti-GPX3 (mouse), pAb at 1:2'000 dilution. 1: Mouse GPX3 (FLAG ® -tagged). 2: Human GPX3 (FLAG ® -tagged) 3: Mouse serum #1 (Balb/c, 2µl) 4: Mouse serum #2 (ICR, 2µl)