

[Go to Product page](#)

Datasheet for ABIN1169118

anti-ITLN1/Omentin antibody (AA 95-115)**2** Images

Overview

Quantity:	100 µg
Target:	ITLN1/Omentin (ITLN1)
Binding Specificity:	AA 95-115
Reactivity:	Human
Host:	Rabbit
Clonality:	Polyclonal
Application:	Western Blotting (WB), ELISA

Product Details

Immunogen:	Synthetic peptide corresponding to aa 95-115 (T95VGDRWSSQQGSKADYPEGDG115) of human omentin.
Specificity:	Recognizes human omentin. Detects a band of ~40 kDa by Western blot.
Cross-Reactivity:	Human
Sterility:	0.2 µm filtered

Target Details

Target:	ITLN1/Omentin (ITLN1)
Alternative Name:	Omentin (ITLN1 Products)
Background:	Omentin (Intelectin-1) is highly expressed in omental adipose tissue, small intestine and various other tissues. Omentin has no effect on basal glucose uptake but enhances insulin-stimulated glucose uptake in adipocytes. It increases AKT phosphorylation in the absence and presence of

Target Details

insulin. It was suggested to play a role in the defense system against microorganisms by recognizing carbohydrate chains of pathogens and bacterial components containing galactofuranosyl residues.

UniProt: [Q8WWA0](#)

Application Details

Application Notes: Optimal working dilution should be determined by the investigator.

Restrictions: For Research Use only

Handling

Format: Liquid

Concentration: Lot specific

Buffer: 0.2µm-filtered solution in PBS, pH 7.4. Contains no preservatives.

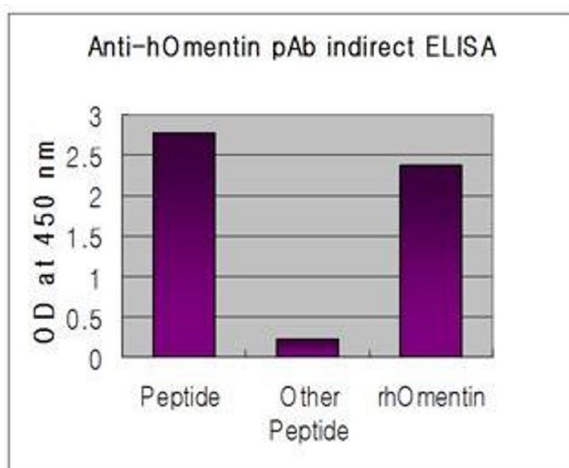
Preservative: Without preservative

Storage: 4 °C,-20 °C

Storage Comment: Short Term Storage: +4°C
Long Term Storage: -20°C
Stable for at least 6 months after receipt when stored at -20°C.

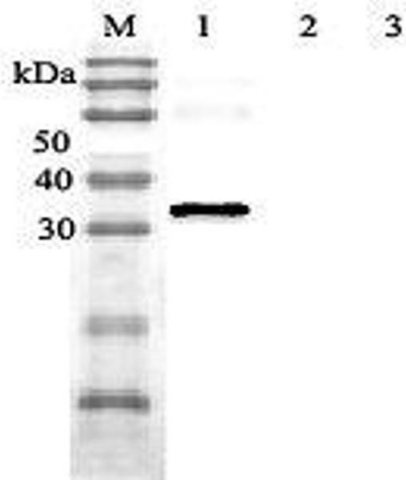
Expiry Date: 6 months

Images



ELISA

Image 1. Indirect ELISA of recombinant human Omentin & synthetic human Nampt peptide (control) using anti-Omentin (human), pAb at 1:50,000 dilution.



Western Blotting

Image 2. Western blot analysis using anti-Omentin (human), pAb at 1:2'000 dilution. 1: Human Omentin (His-tagged). 2: Human Nampt (His-tagged) (negative control). 3: Human Clusterin (His-tagged) (negative control).