



[Go to Product page](#)

Datasheet for ABIN1169125

anti-SEN2 antibody (Catalytic Domain)

1 Image

Overview

Quantity:	100 µg
Target:	SEN2
Binding Specificity:	Catalytic Domain
Reactivity:	Mouse
Host:	Rabbit
Clonality:	Polyclonal
Application:	Western Blotting (WB), ELISA

Product Details

Immunogen:	Recombinant mouse SEN2 (catalytic domain).
Specificity:	Recognizes mouse SEN2. Detects a band of ~26 kDa (rec) and ~68 kDa in mouse brain lysate by Western blot.
Cross-Reactivity:	Mouse (Murine)
Sterility:	0.2 µm filtered

Target Details

Target:	SEN2
Alternative Name:	SEN2 (SEN2 Products)
Background:	SEN2 is a protease that catalyzes two essential functions in the SUMO pathway: processing of full-length SUMO1, SUMO2 and SUMO3 to their mature forms and deconjugation of SUMO1, SUMO2 and SUMO3 from targeted proteins. Downregulates CTNNB1 levels and thereby

Target Details

modulates the Wnt pathway.

UniProt: [Q91ZX6](#)

Pathways: [Chromatin Binding](#)

Application Details

Application Notes: Optimal working dilution should be determined by the investigator.

Restrictions: For Research Use only

Handling

Format: Liquid

Concentration: Lot specific

Buffer: 0.2µm-filtered solution in PBS, pH 7.4. Contains no preservatives.

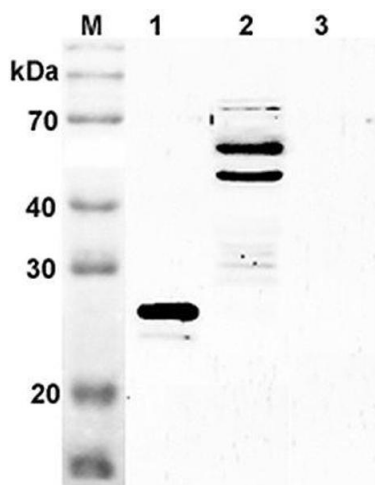
Preservative: Without preservative

Storage: 4 °C, -20 °C

Storage Comment: Short Term Storage: +4°C
Long Term Storage: -20°C
Stable for at least 6 months after receipt when stored at -20°C.

Expiry Date: 6 months

Images



Western Blotting

Image 1. Western blot analysis using anti-SENP2 (mouse), pAb at 1:2'000 dilution. 1: Mouse SENP2 (catalytic domain) (His-tagged). 2: Mouse brain cell lysate (Balb/c mouse, 70µg) 3: Mouse IDO (His-tagged) (negative control).