



[Go to Product page](#)

Datasheet for ABIN1169247

anti-DLL1 antibody

1 Image

Overview

Quantity:	100 µg
Target:	DLL1
Reactivity:	Human
Host:	Rat
Clonality:	Polyclonal
Application:	Western Blotting (WB), ELISA

Product Details

Immunogen:	Recombinant human DLL1.
Specificity:	Recognizes human DLL1. Detects a band of ~68 kDa by Western blot.
Cross-Reactivity:	Human
Sterility:	0.2 µm filtered

Target Details

Target:	DLL1
Alternative Name:	DLL1 (DLL1 Products)
Background:	The Notch ligand delta-like protein 1 (DLL1) is essential for postnatal arteriogenesis and contributes to tumor progression. DLL1 is involved in differentiation and self-renewal of adipocyte stem cells. Blocks the differentiation of progenitor cells into the B cell lineage while promoting the emergence of a population of cells with the characteristics of a T-cell/NK-cell precursor.

Target Details

UniProt: [O00548](#)

Pathways: [Notch Signaling, Stem Cell Maintenance](#)

Application Details

Application Notes: Optimal working dilution should be determined by the investigator.

Restrictions: For Research Use only

Handling

Format: Liquid

Concentration: Lot specific

Buffer: 0.2µm-filtered solution in PBS, pH 7.4. Contains no preservatives.

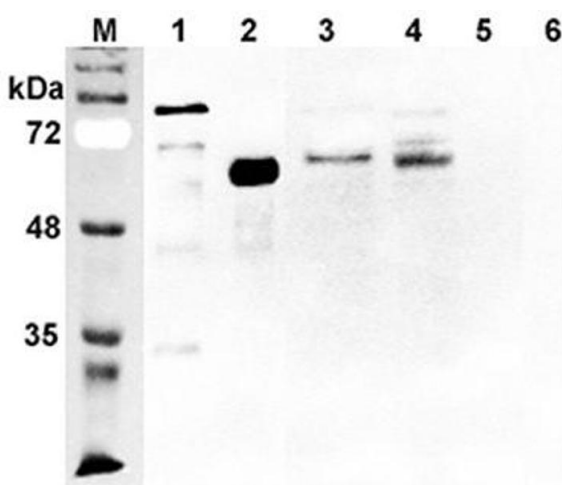
Preservative: Without preservative

Storage: 4 °C,-20 °C

Storage Comment: Short Term Storage: +4°C
Long Term Storage: -20°C
Stable for at least 6 months after receipt when stored at -20°C.

Expiry Date: 6 months

Images



Western Blotting

Image 1. Western blot analysis using anti-DLL1 (human), pAb at 1:2'000 dilution. 1: Human DLL1 Fc-protein. 2: Human DLL1 (FLAG® -tagged) 3: Transfected human DLL1 cell lysate (HEK 293). 4: Primary human pancreatic mesenchymal cell lysate. 5: Mock transfected HEK 293 cell lysate. 6: Human Progranulin (FLAG® -tagged) (negative control).