



[Go to Product page](#)

Datasheet for ABIN1169274

anti-CTRP6 antibody (Globular Domain, Globular Domain-less)

2 Images

Overview

Quantity:	100 µg
Target:	CTRP6 (C1QTNF6)
Binding Specificity:	Globular Domain, Globular Domain-less
Reactivity:	Human
Host:	Mouse
Clonality:	Monoclonal
Application:	Western Blotting (WB), ELISA

Product Details

Immunogen:	Recombinant human CTRP6 (globular domain-less).
Clone:	256-E
Isotype:	IgG1
Specificity:	Recognizes the N-terminal half of human CTRP6 full-length protein. Detects bands of ~16 kDa and ~32 kDa by Western blot.
Cross-Reactivity:	Human
Purification:	Purified from concentrated hybridoma tissue culture supernatant.
Sterility:	0.2 µm filtered

Target Details

Target:	CTRP6 (C1QTNF6)
---------	-----------------

Target Details

Alternative Name: CTRP6 ([C1QTNF6 Products](#))

Background: CTRP6 mediates the phosphorylation of AMPK and acetyl-CoA carboxylase (ACC) in skeletal muscle cells, subsequently mediating glycogen accumulation and fatty acid oxidation. It induces the expression of the potent anti-inflammatory cytokine IL-10 in macrophages. CTRP6 may be a potential serum marker for hepatocellular carcinoma, contributing to tumor angiogenesis by activating the Akt pathway. CTRP6 was also shown to be associated with obesity, type 1 diabetes mellitus (T1D), vitiligo (depigmentation of the skin) and ASFV (African Swine Fever Virus). CTRP6 forms homotrimers and higher-order oligomers and it may also form heteromeric complexes with CTRP1. May be involved in kidney inflammation.

UniProt: [Q9BXI9](#)

Application Details

Application Notes: Optimal working dilution should be determined by the investigator.

Restrictions: For Research Use only

Handling

Format: Liquid

Concentration: Lot specific

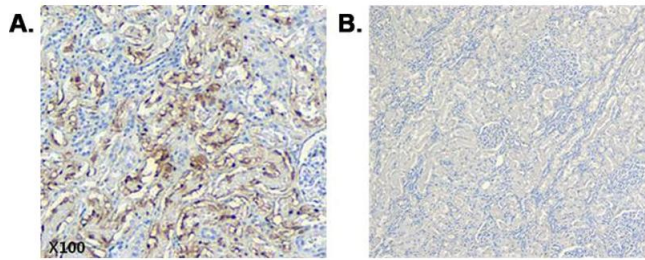
Buffer: 0.2µm-filtered solution in PBS, pH 7.4. Contains no preservatives.

Preservative: Without preservative

Storage: 4 °C,-20 °C

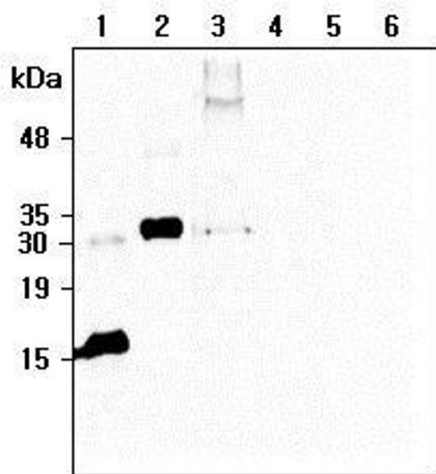
Storage Comment: Short Term Storage: +4°C
Long Term Storage: -20°C
Stable for at least 1 year after receipt when stored at -20°C.

Expiry Date: 12 months



Immunohistochemistry

Image 1. Immunohistochemical staining of CTRP6 using anti-CTRP6 (human), mAb (256-E) in human tissue. Method: A. Paraffin-embedded human kidney tissue, showing stained cell cytoplasm using anti-CTRP6 (human), mAb (256-E) at dilution 1:200 (under X100 lens, Brown color). B. Human kidney stained with isotype control IgG1κ (Negative control, under X100 lens).



Western Blotting

Image 2. Western blot analysis of recombinant human CTRP6 using anti-CTRP6 (human), mAb (256-E) at 1:500 dilution: 1. Recombinant human CTRP6 (globular domain-less) protein (His-tagged). 2. Recombinant human CTRP6 (full-length) Protein (FLAG). 3. hCTRP6-FLAG (full-length) transfected HEK293 cell lysates. 4. Empty vector transfected HEK293 cell lysates. 5. Recombinant human CTRP6 (globular domain) protein (His-tagged). 6. An unrelated protein (His-tagged).