

Datasheet for ABIN1169349

anti-IL1RL1 antibody[Go to Product page](#)**1** Image

Overview

Quantity:	100 µg
Target:	IL1RL1
Reactivity:	Human
Host:	Rabbit
Clonality:	Polyclonal
Application:	Western Blotting (WB), ELISA, Flow Cytometry (FACS)

Product Details

Immunogen:	Recombinant human soluble ST2.
Specificity:	Recognizes soluble human ST2. Detects a band of ~50 kDa by Western blot and the endogenous ST2 by Flow Cytometry.
Cross-Reactivity:	Human
Sterility:	0.2 µm filtered

Target Details

Target:	IL1RL1
Alternative Name:	ST2 (IL1RL1 Products)
Background:	ST2 is a member of the Toll/IL-1 receptor family. Two forms of the protein exist, a soluble form known as ST2 and a membrane anchored form known as ST2L. The membrane form is expressed by Th2 cells and bone marrow derived mast cells, whereas the soluble form is expressed by serum-stimulated fibroblasts. It binds IL-33 and is structurally similar to IL-1R1.

Target Details

Type 2 innate lymphoid cells (ILC2), originally referred to as natural helper (NH) cells, are a novel target of IL-33. Lung ILC2s participate in the induction of airway inflammation in influenza virus-infected mice and papain-administrated mice. Soluble ST2 plays a role in protecting ILC2 from IL-33 stimulation and thereby maintaining them in a naive state and might be important for the regulation of several disease. Blocking with anti-ST2 antibodies has been shown to alleviate experimental arthritis and airway inflammation. The IL-33-ST2 axis is involved across a range of diseases including asthma, allergies, obesity and cardiac disease.

UniProt: [Q01638](#)

Application Details

Application Notes: Optimal working dilution should be determined by the investigator.

Restrictions: For Research Use only

Handling

Format: Liquid

Concentration: Lot specific

Buffer: In PBS containing 0.02 % sodium azide.

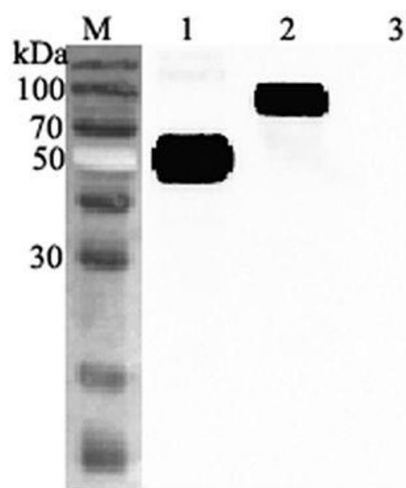
Preservative: Sodium azide

Precaution of Use: This product contains Sodium azide: a POISONOUS AND HAZARDOUS SUBSTANCE which should be handled by trained staff only.

Storage: 4 °C, -20 °C

Storage Comment: Short Term Storage: +4°C
Long Term Storage: -20°C
Stable for at least 6 months after receipt when stored at -20°C.

Expiry Date: 6 months



Western Blotting

Image 1. Western blot analysis using anti-ST2 (human), pAb at 1:2'000 dilution. 1: Human soluble ST2 (FLAG ® -tagged). 2: Human soluble ST2 Fc-protein. 3: Human Vaspin (FLAG ® -tagged) (negative control).