

Datasheet for ABIN1169355
anti-RELM alpha antibody[Go to Product page](#)

1 Image

Overview

| | |
|--------------|------------------------------|
| Quantity: | 50 µg |
| Target: | RELM alpha |
| Reactivity: | Mouse |
| Host: | Rat |
| Clonality: | Monoclonal |
| Application: | Western Blotting (WB), ELISA |

Product Details

| | |
|-------------------|---|
| Immunogen: | Recombinant mouse RELM-alpha. |
| Clone: | MREL 127 |
| Isotype: | IgG2a |
| Specificity: | Recognizes mouse RELM-alpha. Detects a band of ~10 kDa by Western blot. |
| Cross-Reactivity: | Mouse (Murine) |
| Sterility: | 0.2 µm filtered |

Target Details

| | |
|-------------------|--|
| Target: | RELM alpha |
| Alternative Name: | RELM-alpha (RELM alpha Products) |
| Background: | RELM-alpha is a member to the family of adipocyte-secreted proteins called adipocytokines. It is abundantly expressed in white adipose tissue but not in preadipocytes, nor 3T3-L1 |

Target Details

adipocytes. RELM- α is involved in the regulation of colonic inflammation and might be a link between colonic injury, glucose tolerance, and energy intake.

UniProt: [Q9EP95](#)

Application Details

Application Notes: Optimal working dilution should be determined by the investigator.

Restrictions: For Research Use only

Handling

Format: Liquid

Concentration: Lot specific

Buffer: 0.2 μ m-filtered solution in PBS, pH 7.4. Contains no preservatives.

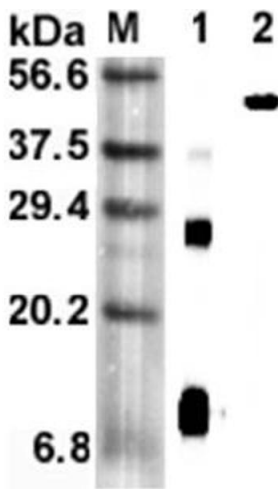
Preservative: Without preservative

Storage: 4 °C,-20 °C

Storage Comment: Short Term Storage: +4°C
Long Term Storage: -20°C
Stable for at least 1 year after receipt when stored at -20°C.

Expiry Date: 12 months

Images



Western Blotting

Image 1. Western blot analysis using anti-RELM- α (mouse), mAb (MREL 127) at 1:5'000 dilution. 1: Mouse RELM- α (His-tagged). 2: Mouse RELM- α Fc-protein.