

Datasheet for ABIN1169356
anti-RELM alpha antibody[Go to Product page](#)

1 Image

Overview

Quantity:	50 µg
Target:	RELM alpha
Reactivity:	Rat
Host:	Mouse
Clonality:	Monoclonal
Application:	Western Blotting (WB), ELISA

Product Details

Immunogen:	Recombinant rat RELM-alpha.
Clone:	RREL 803
Isotype:	IgG2a
Specificity:	Recognizes rat RELM-alpha. Detects a band of ~10.5 kDa by Western blot.
Cross-Reactivity:	Rat (Rattus)
Cross-Reactivity (Details):	Weakly cross-reacts with mouse RELM-alpha.
Sterility:	0.2 µm filtered

Target Details

Target:	RELM alpha
Alternative Name:	RELM-alpha (RELM alpha Products)
Background:	RELM-alpha is a member to the family of adipocyte-secreted proteins called adipocytokines. It

Target Details

is abundantly expressed in white adipose tissue but not in preadipocytes, nor 3T3-L1 adipocytes. RELM- α is involved in the regulation of colonic inflammation and might be a link between colonic injury, glucose tolerance, and energy intake.

UniProt: [Q99P85](#)

Application Details

Application Notes: Optimal working dilution should be determined by the investigator.

Restrictions: For Research Use only

Handling

Format: Liquid

Concentration: Lot specific

Buffer: 0.2 μ m-filtered solution in PBS, pH 7.4. Contains no preservatives.

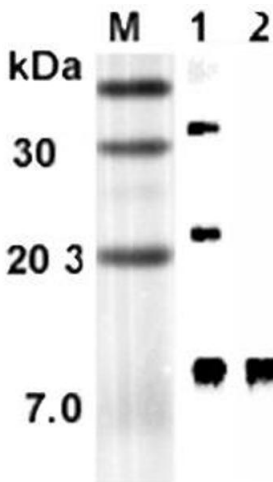
Preservative: Without preservative

Storage: 4 °C, -20 °C

Storage Comment: Short Term Storage: +4°C
Long Term Storage: -20°C
Stable for at least 1 year after receipt when stored at -20°C.

Expiry Date: 12 months

Images



Western Blotting

Image 1. Western blot analysis using anti-RELM- α (rat), mAb (RREL 803) at 1:5'000 dilution. 1: Rat RELM- α (His-tagged). 2: Mouse RELM- α Fc-protein.