

Datasheet for ABIN1169358  
**anti-RELM alpha antibody**[Go to Product page](#)

## 1 Image

## Overview

Quantity:	100 µg
Target:	RELM alpha
Reactivity:	Rat
Host:	Rabbit
Clonality:	Polyclonal
Conjugate:	This RELM alpha antibody is un-conjugated
Application:	Western Blotting (WB), ELISA

## Product Details

Immunogen:	Recombinant rat RELM-alpha.
Specificity:	Recognizes rat RELM-alpha. Detects a band of ~9.5 kDa by Western blot.
Cross-Reactivity:	Rat (Rattus)
Cross-Reactivity (Details):	Weakly cross-reacts with mouse RELM-alpha.
Sterility:	0.2 µm filtered

## Target Details

Target:	RELM alpha
Alternative Name:	RELM-alpha ( <a href="#">RELM alpha Products</a> )
Background:	RELM-alpha is a member to the family of adipocyte-secreted proteins called adipocytokines. It is abundantly expressed in white adipose tissue but not in preadipocytes, nor 3T3-L1

## Target Details

adipocytes. RELM- $\alpha$  is involved in the regulation of colonic inflammation and might be a link between colonic injury, glucose tolerance, and energy intake.

UniProt: [Q99P85](#)

## Application Details

Application Notes: Optimal working dilution should be determined by the investigator.

Restrictions: For Research Use only

## Handling

Format: Liquid

Concentration: Lot specific

Buffer: 0.2 $\mu$ m-filtered solution in PBS, pH 7.4. Contains no preservatives.

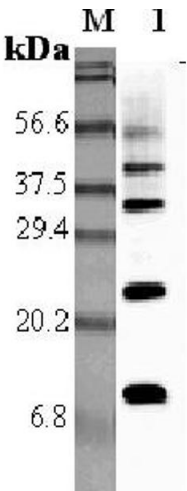
Preservative: Without preservative

Storage: 4 °C, -20 °C

Storage Comment: Short Term Storage: +4°C  
Long Term Storage: -20°C  
Stable for at least 6 months after receipt when stored at -20°C.

Expiry Date: 6 months

## Images



### Western Blotting

**Image 1.** Western blot analysis using anti-RELM- $\alpha$  (rat), pAb at 1:5'000 dilution. 1: Rat RELM- $\alpha$ .