

Datasheet for ABIN1169403

**anti-RETNLB antibody**[Go to Product page](#)**1** Image

## Overview

Quantity:	100 µg
Target:	RETNLB
Reactivity:	Mouse
Host:	Rabbit
Clonality:	Polyclonal
Application:	Western Blotting (WB), ELISA

## Product Details

Immunogen:	Recombinant mouse RELM-beta.
Specificity:	Recognizes mouse RELM-beta. Detects a band of ~12 kDa by Western blot.
Cross-Reactivity:	Mouse (Murine)
No Cross-Reactivity:	Human
Cross-Reactivity (Details):	Does not cross-react with human RELM-beta.
Sterility:	0.2 µm filtered

## Target Details

Target:	RETNLB
Alternative Name:	RELM-beta ( <a href="#">RETNLB Products</a> )
Background:	RELM-beta is a 19 kDa disulfide-linked homodimeric protein expressed in the epithelium of the colon and small bowel. RELM-beta has been suggested to play a regulatory role during

## Target Details

inflammation and may also act to establish links among adipose tissue, the intestine and the liver. Interestingly, the molecular structure of RELM-beta is highly homologous to that of the adipose-derived cytokine resistin.

UniProt: [Q99P86](#)

Pathways: [Hormone Activity](#)

## Application Details

Application Notes: Optimal working dilution should be determined by the investigator.

Restrictions: For Research Use only

## Handling

Format: Liquid

Concentration: Lot specific

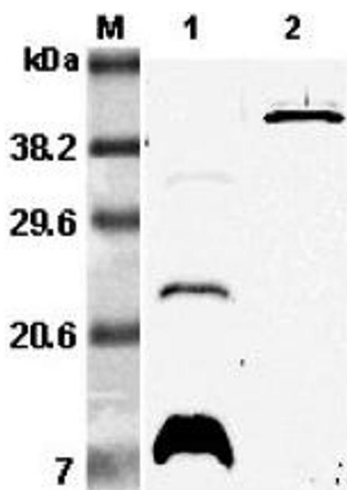
Buffer: 0.2µm-filtered solution in PBS, pH 7.4. Contains no preservatives.

Preservative: Without preservative

Storage: 4 °C,-20 °C

Storage Comment: Short Term Storage: +4°C  
Long Term Storage: -20°C  
Stable for at least 6 months after receipt when stored at -20°C.

Expiry Date: 6 months



Western Blotting

**Image 1.** Western blot analysis using anti-RELM- $\beta$  (mouse), pAb at 1:5'000 dilution. 1: Mouse RELM- $\beta$ . 2: Mouse RELM- $\beta$  Fc-protein.