

Datasheet for ABIN1169407

**anti-RETNLB antibody**[Go to Product page](#)**1** Image

## Overview

Quantity:	100 µg
Target:	RETNLB
Reactivity:	Mouse
Host:	Rat
Clonality:	Monoclonal
Application:	Western Blotting (WB), ELISA

## Product Details

Immunogen:	Recombinant mouse RELM-beta.
Clone:	MRB 46L
Isotype:	IgG2a
Specificity:	Recognizes mouse RELM-beta. Detects a band of ~10 kDa by Western blot.
Cross-Reactivity:	Mouse (Murine)
No Cross-Reactivity:	Human
Cross-Reactivity (Details):	Does not cross-react with human RELM-beta.
Sterility:	0.2 µm filtered

## Target Details

Target:	RETNLB
Alternative Name:	RELM-beta ( <a href="#">RETNLB Products</a> )



## Target Details

**Background:** RELM-beta is a 19 kDa disulfide-linked homodimeric protein expressed in the epithelium of the colon and small bowel. RELM-beta has been suggested to play a regulatory role during inflammation and may also act to establish links among adipose tissue, the intestine and the liver. Interestingly, the molecular structure of RELM-beta is highly homologous to that of the adipose-derived cytokine resistin.

**UniProt:** [Q99P86](#)

**Pathways:** [Hormone Activity](#)

## Application Details

**Application Notes:** Optimal working dilution should be determined by the investigator.

**Restrictions:** For Research Use only

## Handling

**Format:** Liquid

**Concentration:** Lot specific

**Buffer:** 0.2µm-filtered solution in PBS, pH 7.4. Contains no preservatives.

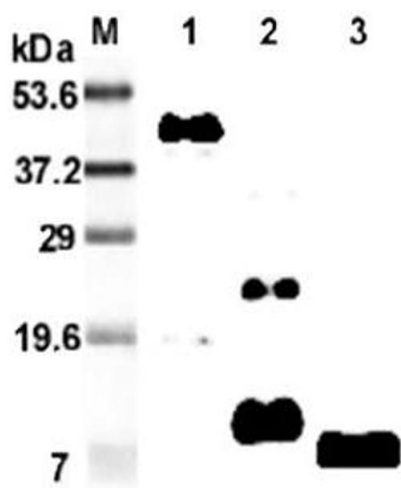
**Preservative:** Without preservative

**Storage:** 4 °C,-20 °C

**Storage Comment:** Short Term Storage: +4°C  
Long Term Storage: -20°C  
Stable for at least 1 year after receipt when stored at -20°C.

**Expiry Date:** 12 months





Western Blotting

**Image 1.** Western blot analysis using anti-RELM-β (mouse), mAb (MRB 46L) at 1:2'000 dilution. 1: Mouse RELM-β Fc-fusion protein. 2: Recombinant mouse RELM-β protein. 3: RELM-β isolated from mouse stool.