



[Go to Product page](#)

Datasheet for ABIN1172518
anti-IFNA4 antibody (Biotin)

1 Image

Overview

Quantity:	200 µL
Target:	IFNA4 (IFNa4)
Reactivity:	Mouse
Host:	Rabbit
Clonality:	Polyclonal
Conjugate:	This IFNA4 antibody is conjugated to Biotin
Application:	Western Blotting (WB), Immunohistochemistry (IHC), ELISA

Product Details

Immunogen:	The antibody is a rabbit polyclonal antibody raised against IFNa4 conjugated to biotin.
Isotype:	IgG
Specificity:	It has been selected for its ability to recognize IFNa4 in immunohistochemical staining and Western blotting.
Purification:	Affinity Chromatography

Target Details

Target:	IFNA4 (IFNa4)
Alternative Name:	Interferon Alpha 4 (IFNa4) (IFNa4 Products)
Pathways:	JAK-STAT Signaling , Hepatitis C

Application Details

Application Notes: Western blotting: 1:100-400
Immunocytochemistry in formalin fixed cells: 1:100-500
Immunohistochemistry in formalin fixed frozen section: 1:100-500
Immunohistochemistry in paraffin section: 1:50-200
Enzyme-linked Immunosorbent Assay: 1:100-200
Optimal working dilutions must be determined by end user.

Restrictions: For Research Use only

Handling

Format: Liquid

Concentration: Lot specific

Buffer: Supplied as solution form in PBS, pH7.4, containing 0.02 % NaN₃, 50 % glycerol.

Preservative: Sodium azide

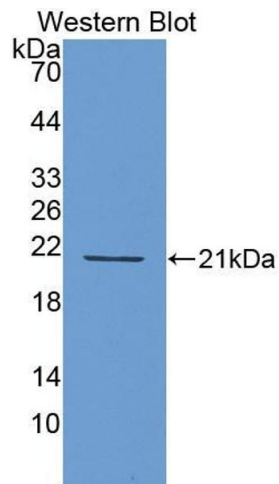
Precaution of Use: WARNING: Reagents contain sodium azide. Sodium azide is very toxic if ingested or inhaled. Avoid contact with skin, eyes, or clothing. Wear eye or face protection when handling. If skin or eye contact occurs, wash with copious amounts of water. If ingested or inhaled, contact a physician immediately. Sodium azide yields toxic hydrazoic acid under acidic conditions. Dilute azide-containing compounds in running water before discarding to avoid accumulation of potentially explosive deposits in lead or copper plumbing.

Handling Advice: Avoid repeated freeze/thaw cycles

Storage: 4 °C

Storage Comment: Store at 2-8 °C for one month. Aliquot and store at -80 °C for 12 months.

Expiry Date: 12 months



Western Blotting

Image 1. Figure. Western Blot; Sample: Recombinant protein.