

Datasheet for ABIN1172667
anti-Trypsin antibody (Biotin)



[Go to Product page](#)

1 Image

Overview

Quantity:	200 µL
Target:	Trypsin
Reactivity:	Pig
Host:	Rabbit
Clonality:	Polyclonal
Conjugate:	This Trypsin antibody is conjugated to Biotin
Application:	Western Blotting (WB), ELISA, Immunohistochemistry (IHC)

Product Details

Immunogen:	The native protein TRY from pancreas The antibody is a rabbit polyclonal antibody raised against TRY conjugated to biotin.
Isotype:	IgG
Specificity:	It has been selected for its ability to recognize TRY in immunohistochemical staining and Western blotting.
Purification:	Affinity Chromatography

Target Details

Target:	Trypsin
Alternative Name:	Trypsin (TRY) (Trypsin Products)

Application Details

Application Notes: Western blotting: 1:100-400
Immunocytochemistry in formalin fixed cells: 1:100-500
Immunohistochemistry in formalin fixed frozen section: 1:100-500
Immunohistochemistry in paraffin section: 1:50-200
Enzyme-linked Immunosorbent Assay: 1:100-200
Optimal working dilutions must be determined by end user.

Restrictions: For Research Use only

Handling

Format: Liquid

Concentration: Lot specific

Buffer: Supplied as solution form in PBS, pH7.4, containing 0.02 % NaN₃, 50 % glycerol.

Preservative: Sodium azide

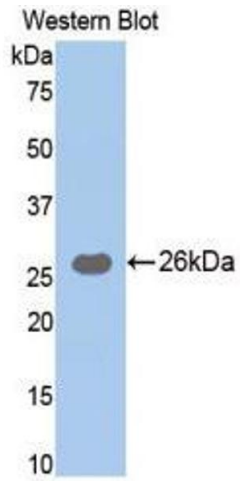
Precaution of Use: WARNING: Reagents contain sodium azide. Sodium azide is very toxic if ingested or inhaled. Avoid contact with skin, eyes, or clothing. Wear eye or face protection when handling. If skin or eye contact occurs, wash with copious amounts of water. If ingested or inhaled, contact a physician immediately. Sodium azide yields toxic hydrazoic acid under acidic conditions. Dilute azide-containing compounds in running water before discarding to avoid accumulation of potentially explosive deposits in lead or copper plumbing.

Handling Advice: Avoid repeated freeze/thaw cycles

Storage: 4 °C

Storage Comment: Store at 2-8 °C for one month. Aliquot and store at -80 °C for 12 months.

Expiry Date: 12 months



Western Blotting

Image 1.