



[Go to Product page](#)

Datasheet for ABIN1173055
anti-MBP antibody (Biotin)

2 Images

Overview

Quantity:	200 µL
Target:	MBP
Reactivity:	Human
Host:	Rabbit
Clonality:	Polyclonal
Conjugate:	This MBP antibody is conjugated to Biotin
Application:	Western Blotting (WB), Immunohistochemistry (IHC), ELISA

Product Details

Immunogen:	Recombinant MBP expressed in E.coli.USCN The antibody is a rabbit polyclonal antibody raised against MBP conjugated to biotin.
Sequence:	MSPILGYWKI KGLVQPTRL L LEYLEEKYEE HLYERDEGDK WRNKKFELGL EFPNLPYYID GDVKLTQSMA IIRYIADKHN MLGGCPKERA EISMLEGAVL DIRYGVSRIA YSKDFETLKV DFLSKLPEML KMFEDRLCHK TYLNGDHVTH PDFMLYDALD VVLYMDPMCL DAFPKLVCFK KRIEAIQID KYLKSSKYIA WPLQGWQATF GGDHPPKSD GSTSGSGHHH HHHSAGLVPR GSTAIGMKET AAKFERQHM DSPDLGTLEV LFQGPLGSPE F-V VHFFKNIVTP RTPPPSQGKG RGLSLSRFSW GAEGQRPFG YGGRASDYKS AHKGFKGVDA QGTLISKIFKL GGRDSRSGSP M
Isotype:	IgG
Specificity:	It has been selected for its ability to recognize MBP in immunohistochemical staining and Western blotting.
Purification:	Affinity Chromatography

Target Details

Target: MBP

Abstract: [MBP Products](#)

Application Details

Application Notes: Western blotting: 1:100-400
Immunocytochemistry in formalin fixed cells: 1:100-500
Immunohistochemistry in formalin fixed frozen section: 1:100-500
Immunohistochemistry in paraffin section: 1:50-200
Enzyme-linked Immunosorbent Assay: 1:100-200
Optimal working dilutions must be determined by end user.

Restrictions: For Research Use only

Handling

Format: Liquid

Concentration: Lot specific

Buffer: Supplied as solution form in PBS, pH7.4, containing 0.02 % NaN₃, 50 % glycerol.

Preservative: Sodium azide

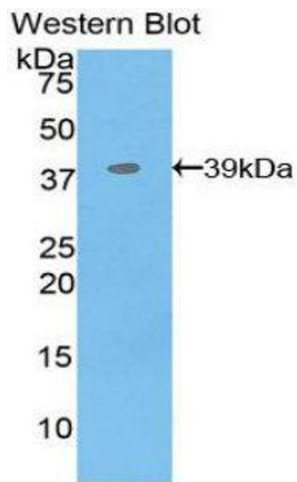
Precaution of Use: WARNING: Reagents contain sodium azide. Sodium azide is very toxic if ingested or inhaled. Avoid contact with skin, eyes, or clothing. Wear eye or face protection when handling. If skin or eye contact occurs, wash with copious amounts of water. If ingested or inhaled, contact a physician immediately. Sodium azide yields toxic hydrazoic acid under acidic conditions. Dilute azide-containing compounds in running water before discarding to avoid accumulation of potentially explosive deposits in lead or copper plumbing.

Handling Advice: Avoid repeated freeze/thaw cycles

Storage: 4 °C

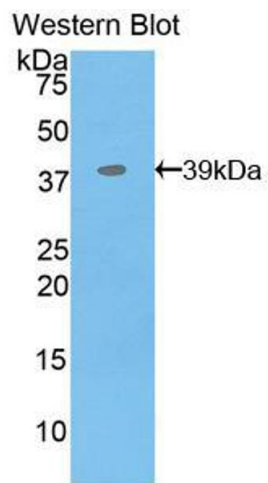
Storage Comment: Store at 2-8 °C for one month. Aliquot and store at -80 °C for 12 months.

Expiry Date: 12 months



Western Blotting

Image 1.



Western Blotting

Image 2. Figure. Western Blot; Sample: Recombinant protein.