

Datasheet for ABIN1175865
anti-PDGFB antibody (AA 21-241)



[Go to Product page](#)

2 Images

Overview

Quantity:	100 µL
Target:	PDGFB
Binding Specificity:	AA 21-241
Reactivity:	Human
Host:	Rabbit
Clonality:	Polyclonal
Conjugate:	This PDGFB antibody is un-conjugated
Application:	Western Blotting (WB), Immunohistochemistry (IHC)

Product Details

Purpose:	Polyclonal Antibody to Platelet Derived Growth Factor Subunit B (PDGFB)
Immunogen:	RPC921Hu01Recombinant Platelet Derived Growth Factor Subunit B (PDGFB)
Isotype:	IgG
Specificity:	The antibody is a rabbit polyclonal antibody raised against PDGFB. It has been selected for its ability to recognize PDGFB in immunohistochemical staining and western blotting.
Cross-Reactivity:	Mouse, Pig, Rat
Purification:	Antigen-specific affinity chromatography followed by Protein A affinity chromatography

Target Details

Target:	PDGFB
---------	-------

Target Details

Alternative Name:	PDGFB (PDGFB Products)
Background:	PDGF-B, PDGF2, SIS, SSV, C-sis, Simian Sarcoma Viral(v-sis)Oncogene Homolog, Platelet Derived Growth Factor Beta Polypeptide, Proto-oncogene c-Sis, Becaplermin
Pathways:	RTK Signaling , Fc-epsilon Receptor Signaling Pathway , EGFR Signaling Pathway , Neurotrophin Signaling Pathway , Regulation of Carbohydrate Metabolic Process , Smooth Muscle Cell Migration , Platelet-derived growth Factor Receptor Signaling

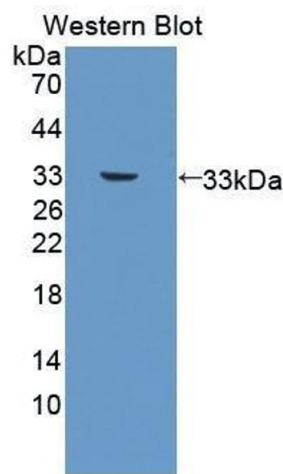
Application Details

Application Notes:	Western blotting: 0.01-2 µg/mL,Immunohistochemistry: 5-20 µg/mL,Optimal working dilutions must be determined by end user.
Comment:	The thermal stability is described by the loss rate. The loss rate was determined by accelerated thermal degradation test, that is, incubate the protein at 37°C for 48h, and no obvious degradation and precipitation were observed. The loss rate is less than 5% within the expiration date under appropriate storage condition.
Restrictions:	For Research Use only

Handling

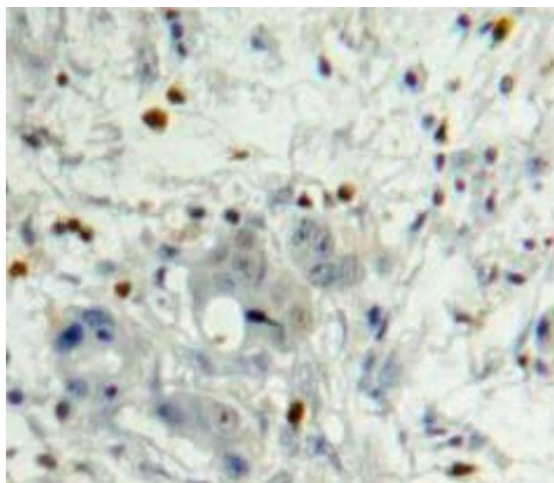
Format:	Liquid
Concentration:	0.5 mg/mL
Buffer:	PBS, pH 7.4, containing 0.02 % Sodium azide, 50 % glycerol.
Preservative:	Sodium azide
Precaution of Use:	WARNING: Reagents contain sodium azide. Sodium azide is very toxic if ingested or inhaled. Avoid contact with skin, eyes, or clothing. Wear eye or face protection when handling. If skin or eye contact occurs, wash with copious amounts of water. If ingested or inhaled, contact a physician immediately. Sodium azide yields toxic hydrazoic acid under acidic conditions. Dilute azide-containing compounds in running water before discarding to avoid accumulation of potentially explosive deposits in lead or copper plumbing.
Handling Advice:	Avoid repeated freeze-thaw cycles.
Storage:	4 °C,-20 °C
Storage Comment:	Store at 4°C for frequent use. Stored at -20°C in a manual defrost freezer for two year without detectable loss of activity. Avoid repeated freeze-thaw cycles.

Expiry Date: 12 months



Western Blotting

Image 1.



Immunohistochemistry

Image 2. Used in DAB staining on formalin fixed paraffin-embedded Pancreas tissue